

— BOND —
ENFORCING
**COLOR
REMOVER**

TECHNICAL MANUAL



Together. A passion for hair.

BOND ENFORCING COLOR REMOVER

Discover our Schwarzkopf Professional Bond Enforcing Color Remover, the 1st colour remover with bond enforcing technology!



WHAT IT IS:

Schwarzkopf Professional Bond Enforcing Color Remover enables a quick and easy reduction of artificial colour build up while maintaining the integrity of the hair.

The creamy mixture has the ideal texture to help you reset your clients' colour history and push your creativity.

Ideal for clients who need a fast and gentle colour correction of unwanted tone directions or for those who have a long colour history.

HOW TO USE:

- ▶ Mix the full content of PART A and PART B with 60ml of developer (please follow the recommendation table).
- ▶ Apply with a brush on dry hair evenly, starting on the darkest areas.

Development time:

- ▶ Up to 20 minutes. Process visually.
- ▶ Rinse, towel dry and apply FIBREPLEX No2, leave in for up to 10 minutes.
- ▶ Rinse the hair and dry.
- ▶ Proceed with the new colour application.

EXPERT TIP

Do not apply shampoo when rinsing the Color Remover. This will keep the natural protection barrier of oils on the scalp, helping to protect it during the next colour service.

HOW IT WORKS:

The easy to apply creamy mixture creates more even, lighter base canvases and softens unwanted tone directions.

Suitable for all your coloured clients, no matter the base, it acts on the hair fibre, reducing the pigment build up and lifting up to 3 levels.

The integrated FibreBond Technology protects and strengthens the hair fibre, making it ready for a new colour service straight away.

MIXING RATIO

mix

1:1:2
A:B:Developer

DEVELOPER STRENGTH

For a soft colour removal use
1.9% IGORA
VIBRANCE Activator

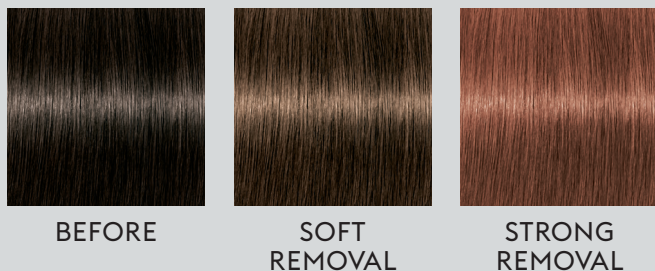
For a strong colour removal use
3% IGORA ROYAL Oil
Developer

LEVELS OF LIFT

1-2 levels

2-3 levels

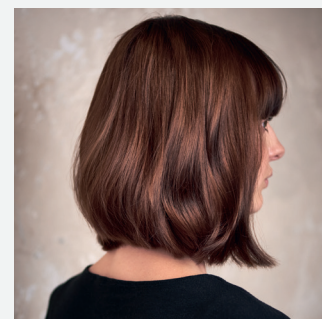
BEFORE - AFTER RESULTS



COLOUR REMOVER BEFORE & AFTER



POST RE-COLOURATION



COMPARISON TABLE

	BOND ENFORCING COLOR REMOVER	TRADITIONAL BLEACH WASH
TEXTURE	▶ Creamy, precise and easy to apply	▶ Liquid, not easy to apply precisely
LIFT	▶ Up to 3 levels of lift	▶ Up to 2 levels of lift
HAIR CONDITION	▶ Hair feels smooth and combability is improved	▶ Hair feels porous
RESULT	▶ Gentle and even colour removal	▶ Potentially uneven and patchy colour results

FAQ:

1. What is the main benefit of SCHWARZKOPF PROFESSIONAL Bond Enforcing Color Remover when compared to a traditional bleach wash?

The SCHWARZKOPF PROFESSIONAL Bond Enforcing Color Remover has the perfect consistency for an effortless application, a uniform reduction of pigments and offers a good hair feeling as well as excellent combability after application.

2. Can I use a 6% / 20Vol. or 9% / 30 Vol. Developer with the SCHWARZKOPF PROFESSIONAL Bond Enforcing Color Remover?

No, we do not recommend using a stronger developer because it may cause patchy results without the promised lifting effect. If more than 3 levels of lift are to be achieved, please use classic bleaching services.

3. Can the SCHWARZKOPF PROFESSIONAL Bond Enforcing Color Remover be used to remove all types of colour?

Yes, it can lift the build-up of most types of artificial pigments up to 3 levels.

4. Can I apply SCHWARZKOPF PROFESSIONAL Bond Enforcing Color Remover on scalp?

Yes, it can be used as on scalp application.

5. What is the main benefit of the integrated bonding technology?

The integrated bonding technology enforces bonds within the hair fibre.



Follow us online
www.schwarzkopfpro.com



Together. A passion for hair.