

- ▶ **INTENSELY CONCENTRATED**
 > UP TO 100 USES IN ONE BOTTLE
- ▶ **MOISTURIZES, SMOOTHS, ADDS SHINE**
AND BODY IN JUST 10 MINUTES



OLAPLEX®

4-IN-1 MOISTURE MASK

All OLAPLEX® products contain the patented ingredient, Bis-Aminopropyl Diglycol Dimaleate, which strengthens & repairs disulfide bonds for the strongest, healthiest hair possible.

WHAT IT IS

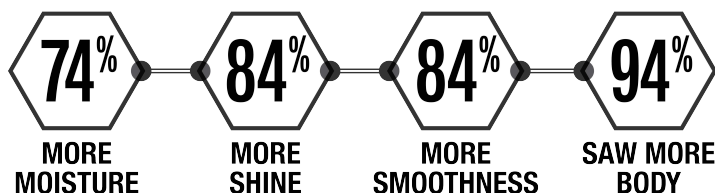
Powered by OLAPLEX's patented technology, this highly concentrated reparative mask adds intense moisture while providing shine & body to treat damaged hair. Professional-strength ceramides, oils, and 11 vital amino acids provide a luxurious, in-salon deep conditioning treatment, with or without a chemical service.

HOW TO USE

Apply 1-3 pumps to freshly washed hair. Work into fragile ends by detangling with fingers. Comb through & let process for 10 minutes. Rinse thoroughly & style as desired.

PRO Rx tip: Can be used after all professional chemical services & treatments. For the most intense repair, apply after performing OLAPLEX Stand-Alone Treatment™.

CLINICAL RESULTS ON DAMAGED HAIR



WHY IT WORKS

Time is of the essence in a busy salon. 4-IN-1 Moisture Mask works quickly & efficiently to address dryness in even the most severe cases

OLAPLEX.

INSPIRED BY SALONS. PROVEN BY SCIENCE.