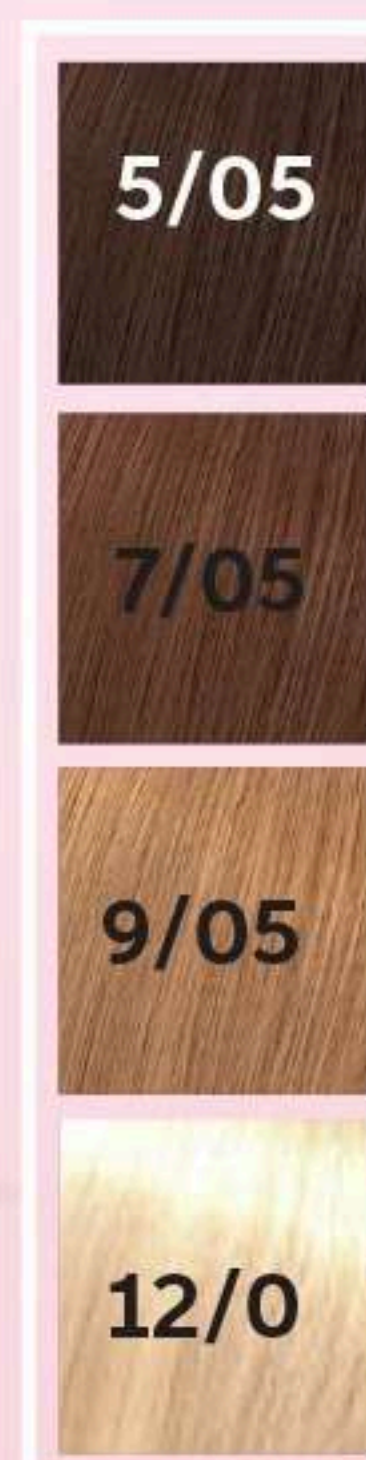
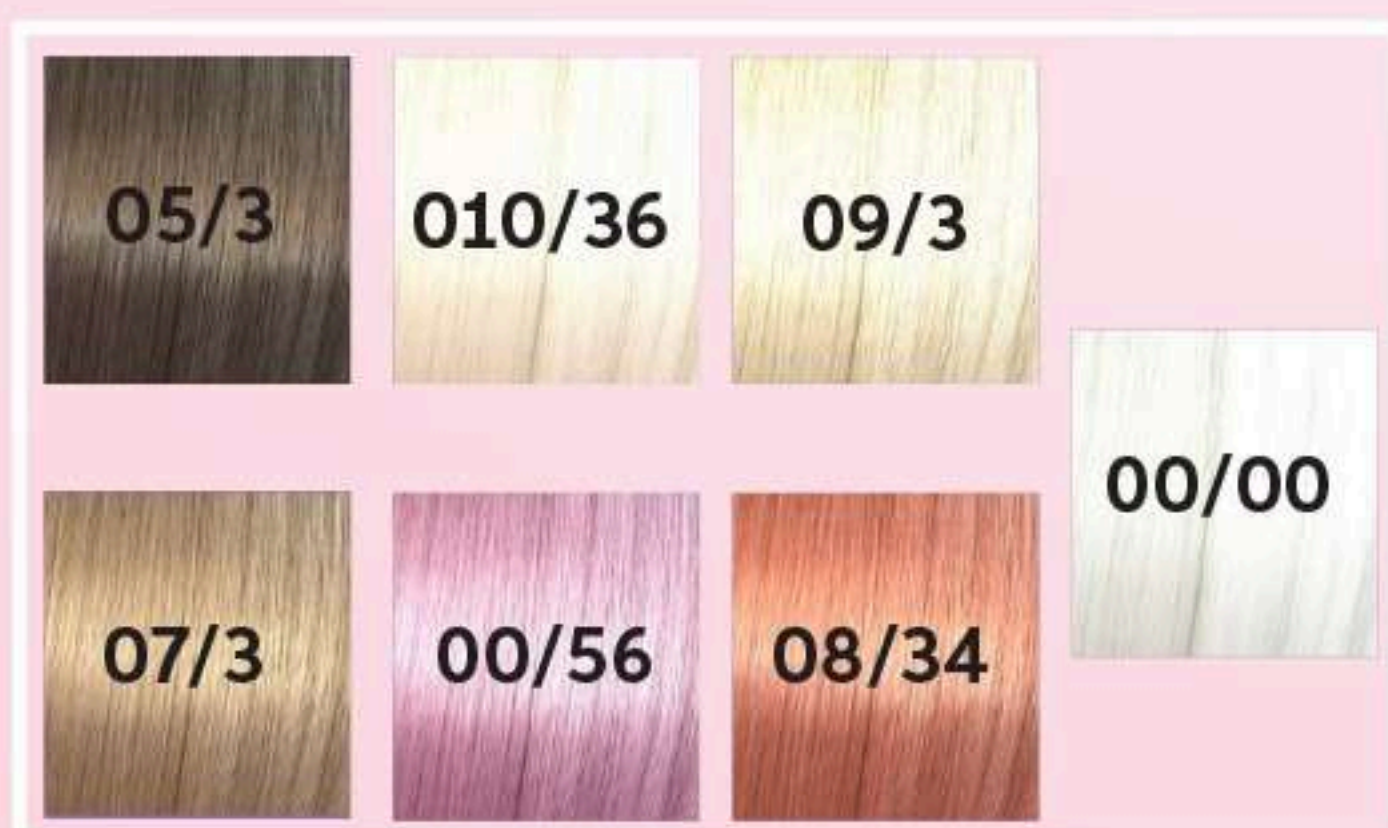


ONE PALETTE, LIMITLESS LOOKS

THE ULTIMATE GOLDEN HOUR PALETTE

This season's hottest trend is warm glowy hair, inspired by the glow from the sun at Golden Hour, the technique is 'Gradient' colour placed in the hair to recreate the shine of light of healthy hair, the Palette is warm gold, peach, rose and pink.

Colour Gradiance is all about pairing the right shades together to create the perfect harmony of light and dark in a warm palette for illuminations that resemble a warm sunset.



These select shades offer endless possibilities for creating unique and captivating colours



**BOTTLE
ACTIVATOR**



**6%
20 VOL.**

1L



**6%
20 VOL.**

1L

**CREATE
EXTRA
SHADES**

- 09/3 + 07/3 1:1 = 08/3
- 05/3 + 07/3 1:1 = 06/3
- 08/34 + 00/00 1:1 = 09/34
- 09/3 + 00/00 1:1 = 010/3
- 5/05 + 7/05 1:1 = 6/05
- 7/05 + 9/05 1:1 = 8/05

THE VERSATILITY OF KOLESTON PERFECT AND SHINEFINITY

KOLESTON PERFECT - 5/05, 7/05, 9/05 :

Glossing – for adding shine with a hint of tone.

Mix 1:1:1 :



5-10 mins development

Can be mixed to create **5 shades** in total

Add to cooler toners to maintain **bright blonde**.e.g. 20g 9/16 + 10g 9/05

100% **grey coverage** in one tube – don't need a base shade

Use them to **refresh** mid lengths and ends after a root touch up.

Mix 1:1 :



Last 15 min of development time.



SHINEFINITY - 05/3, 07/3, 09/3, 08/34, 010/36, 00/00 :

Speed Toning – use the Flash shades including NEW 010/36 for super quick **5 minute** toning with zero lift and zero damage

Corrective Glazing – Darkening up to 3 levels without having to pre pigment – Use a warm shade e.g. 05/37 or add a small amount of 08/34 into your target shade to fill as you colour

Glazing – Zero lift with long-lasting glaze result Use after bleaching services, standalone or on virgin hair.

Speed Glaze with 08/43 - develops in 10 mins

Can be mixed to create an **extra 4 shades**

Pure shine with 00/00

TOP TIP

Use Special Blonde for adding **brighter highlights** or gently remove some previous colour when you don't want to use a bleach product.

