



Schwarzkopf
PROFESSIONAL



IGORA ROYAL

COLOUR CHANGEOVER GUIDE

Your quick start to successfully start with IGORA ROYAL



Dedicated

to **the world of colour**

Together. A passion for hair.



DEAR COLOURIST

Welcome to IGORA ROYAL - True Colour in High Definition. Developed with colourists for colourists it delivers 100% reliable, vibrant and long lasting colour results.

We are committed to true performance, true inspiration and true partnership. Therefore, we understand it is crucial to provide any assistance necessary to ensure you become absolutely confident using our colourations.

This guide serves as a means of orientation to easily convert from your previous colour product to IGORA ROYAL.

In an easy to use table format you can find a shade by shade translation to the IGORA ROYAL portfolio or a corresponding mixing recommendation.

NOTE: The result of a colouration is always influenced by the natural base, the existing base, the hair quality and structure, the percentage of white hair as well as the chosen shade and the desired levels of lift. Therefore, please refer to this Conversion Guide only as orientation. As every colouration has its unique character, minor deviations may occur.

We wish you great fun colouring with the IGORA ROYAL colour regime. In case of any questions regarding this Conversion Guide please contact your local SKP hotline (see back for details).

Your
Schwarzkopf Professional Team

Viton ► IGORA ROYAL

Viton S Igora ROYAL

10.0 _____ 10-0
 9.0 _____ 9-0
 8.0 _____ 8-0
 7.0 _____ 7-0
 6.0 _____ 6-0
 5.0 _____ 5-0
 4.0 _____ 4-0
 3.0 _____ 3-0
 1.0 _____ 1-0

9.0+ _____ 9-00
 8.0+ _____ 8-00
 7.0+ _____ 7-00
 6.0+ _____ 6-00
 5.0+ _____ 5-00

10.1 _____ 10-1
 9.1 _____ 9-1
 8.1 _____ 8-1
 7.1 _____ 7-1
 5.1 _____ 5-1
 6.14 _____ 6-63
 4.14 _____ 4-63

8.2 _____ 8-11
 6.2 _____ 6-12
 4.2 _____ 4-13
 1.2 _____ 1-1

10.03 _____ 10-4
 9.03 _____ 9-4
 8.03 _____ 7-4 +
 9-4 1:1
 7.03 _____ 7-4
 6.03 _____ 6-4
 5.03 _____ 5-4

9.3 _____ 9-55
 8.3 _____ 8-55
 7.3 _____ 7-55
 6.3 _____ 6-5
 5.3 _____ 5-5
 4.3 _____ 4-5

Viton S Igora ROYAL

9.4 _____ 9-65
 8.4 _____ 8-65
 7.4 _____ 7-65
 6.4 _____ 6-6
 5.4 _____ 5-65
 4.4 _____ 4-6
 3.4 _____ 4-60

9.5 _____ 9-7
 7.5 _____ 7-57
 5.5 _____ 5-57

8.6 _____ 8-77
 7.6 _____ 7-77
 6.6 _____ 6-77

6.7 _____ 6-88
 5.7 _____ 5-88
 4.7 _____ 4-88
 5.8 _____ ---
 4.8 _____ 4-68
 3.8 _____ 3-68

8.99 _____ 9-98
 5.9 _____ 6-99
 4.9 _____ 5-99
 3.9 _____ 4-99

GRAPHITE BOOSTER = E.1

Viton Mixtone Igora ROYAL Booster & Neutraliser

Light Blue _____ 0-11
 Dark Blue _____ 0-22
 Gold _____ 0-55
 Copper _____ 0-77
 Red _____ 0-88
 Violet _____ 0-99

GRAPHITE BOOSTER = E.1

12.0 _____ 12-0
 12.1 _____ 12-1
 12.2 _____ 12-2
 12.22 _____ 12-11
 12.03 _____ 12-4
 12.19 _____ 12-19

Blush _____ 9,5-49
 Wheat _____ 9,5-4
 Crystal _____ 9,5-1
 Mandarin _____ BlondMe
 Toning
 Apricot

BlondMe
 White
 Blending

Viton S
 12.03+ _____ Sand
 12.1+ _____ Ice

Viton Mèche Igora Fashion Lights

.0 _____ L-00
 .03 _____ L-44
 .66 _____ L-77
 .88 _____ L-88
 .89 _____ L-89

Viton S Igora ROYAL

9.17 _____ 9-18
 8.29 _____ 8-29
 7.15 _____ 7-17
 6.27 _____ 6-28
 5.24 _____ 5-26

Viton Fashion Plus Igora ROYAL Absolutes Age Blend

8.04+ _____ 9-560
 5.06+ _____ N/A
 6.08+ _____ N/A
 6.34+ _____ 7-560
 7.67+ _____ 7-710

9.3+ _____ 9-50
 8.3+ _____ 8-50
 7.3+ _____ 7-50
 5.3+ _____ 5-50
 7.4+ _____ 7-60
 6.4+ _____ 6-60
 4.4+ _____ 5-60
 6.6+ _____ 6-70
 5.7+ _____ 5-80
 4.9+ _____ 4-90



IGORA ROYAL NUMBERING SYSTEM

COLOUR DEPTH	TONE DIRECTION
	-0 natural
1- black	-1 cendré
	-2 ash
3- dark brown	-3 matt
4- medium brown	-4 beige
5- light brown	-5 beige
6- dark blonde	-6 chocolate
7- medium blonde	-7 copper
8- light blonde	-8 red
9- extra light blonde	-9 violet

THE NUMBER IN FRONT OF THE DASH (6-982):

- Indicates the colour depth of the shade.

THE NUMBERS AFTER THE DASH (6-982):

- The first number after the dash shows the major tone.
- The second number after the dash shows the minor tone.
- Two identical numbers after the dash indicate an intense colour.
- The third number after the dash shows an additional minor tone.

For Igora Royal Absolutes & Absolutes Age Blend:

THE NUMBER IN FRONT OF THE DASH (6-580*):

- Indicates the colour depth of the shade.- Tone on tone colouration
- White hair coverage
- Lifting 1-2 levels

EXTRA NOTE: White hair coverage with IGORA ROYAL Absolutes on more than 90% white hair

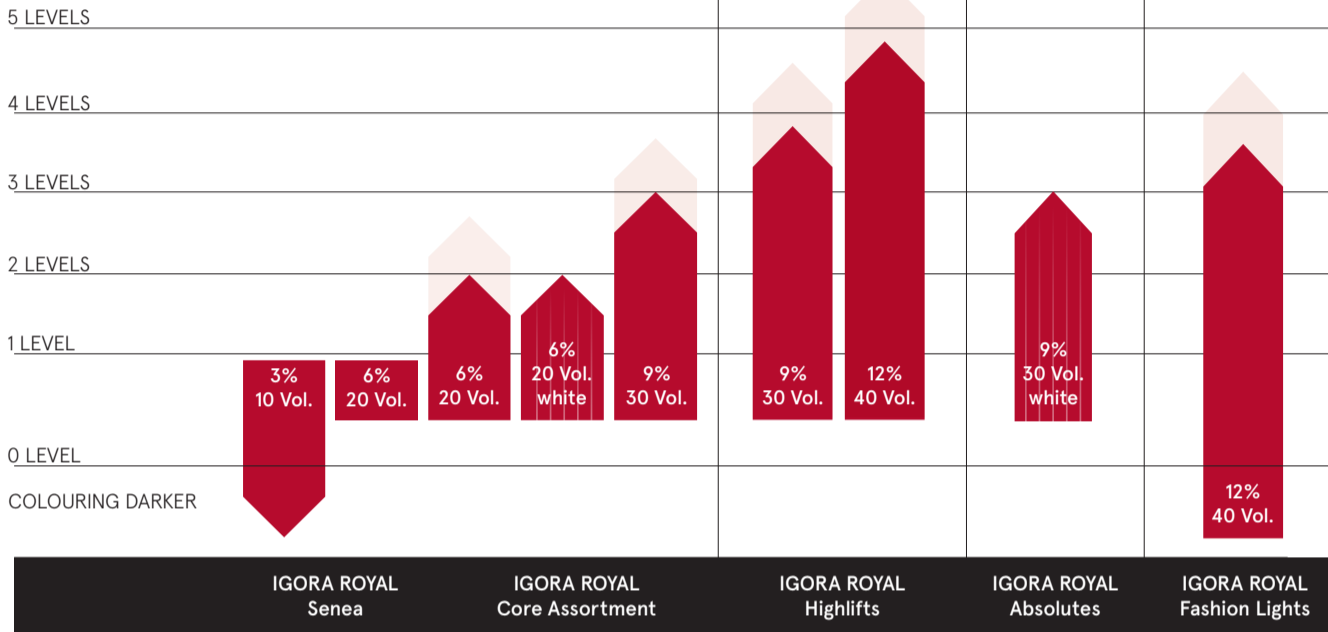
THE NUMBERS AFTER THE DASH (6-580*):

- The first number after the dash shows the major tone.

*The number zero after the dash indicates the natural tone for white coverage.

DEVELOPER USAGE

LEVELS OF LIFT



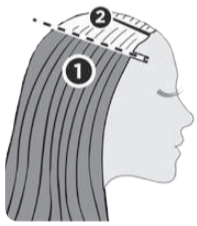
3% 10 Vol.	- Colouring darker - Covering 100% white hair - Colour deposit on pre-lightened hair - Colouring with IGORA ROYAL Pastel Shades
6% 20 Vol.	- Tone on tone colouration - White hair coverage - Lifting 1-2 levels EXTRA NOTE: White hair coverage with IGORA ROYAL Absolutes on more than 90% white hair
9% 30 Vol.	- Lifting 2-3 levels - Colouring with -00 series - White hair coverage with IGORA ROYAL Absolutes - Lifting up to 3 levels with the IGORA ROYAL Ultra
12% 40 Vol.	- Colouring with IGORA ROYAL Fashion Lights - Lifting 3-4 levels with IGORA ROYAL Ultra Blonde series (10-) - Lifting 4-5 levels with IGORA ROYAL Special Blonde series (12-)*

*4-5 levels of lift are achievable on natural base 6 and lighter.

APPLICATION METHODS

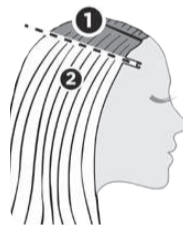
To protect the hairline use IGORA Skin Protection Cream. Apply to dry, unwashed hair.

APPLICATION ON VIRGIN HAIR



APPLICATION

- Apply the colour first on mid-lengths and ends taking fine sections
- Leave about 2cm of the root area out
- Leave to develop for 10 minutes (15 minutes for Fashion Shades)
- Apply the colour to the root area
- Leave to develop for 30 - 45 minutes



RE-GROWTH APPLICATION



APPLICATION

- Apply the IGORA ROYAL colour only to the re-growth area first taking fine sections
- Leave to develop for 15 - 20 minutes
- Apply the colour evenly to mid-lengths and ends
- Leave to develop for 10 - 15 minutes

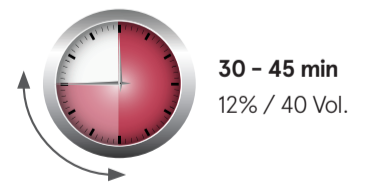
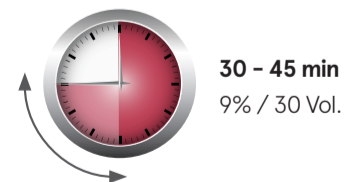
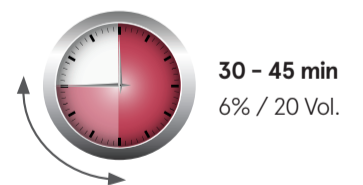
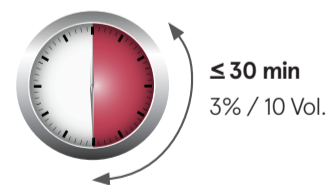
DUAL APPLICATION

This dual application is a professional application method that combines permanent hair colour for the re-growth area with demi- or semi-permanent hair colours for mid-lengths and ends. This system keeps hair lengths and ends in perfect condition for intensive shine and a gentle touch.

APPLICATION

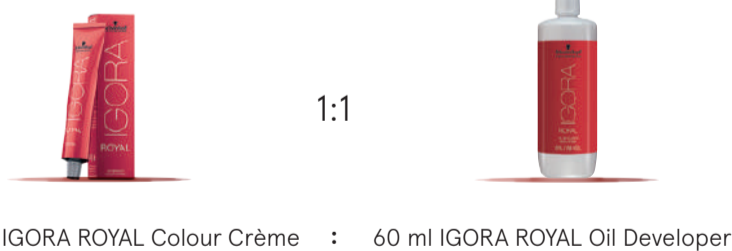
- Apply the permanent IGORA ROYAL colour to the re-growth area first taking fine sections
- Leave to develop for 15 - 20 minutes (Development time depends on the product to be used for mid-lengths and ends)
- Apply IGORA demi- or semi-permanent colour shade to mid-lengths and ends
- Development time depends on the desired intensity and the instruction for use

DEVELOPMENT TIME



MIXING

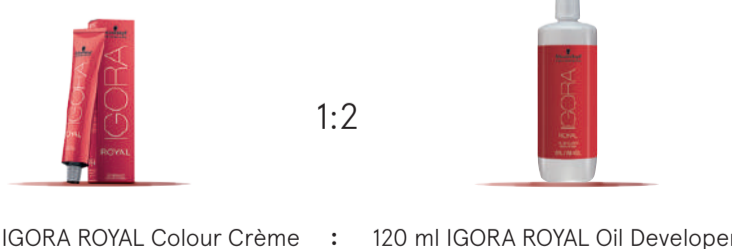
IGORA ROYAL



1:1

60 ml IGORA ROYAL Colour Crème : 60 ml IGORA ROYAL Oil Developer

IGORA ROYAL
Special Blonde Shades
12-series



1:2

60 ml IGORA ROYAL Colour Crème : 120 ml IGORA ROYAL Oil Developer

RINSING

- Emulsify and rinse out thoroughly until water runs clear.
- Shampoo with BC Hairtherapy Colour Freeze Sulfate-free Shampoo and apply BC Hairtherapy Colour Freeze Conditioner or Treatment depending on hair needs.

If you have any further questions regarding the conversion to IGORA Royal, please contact the SKP hotline or the Schwarzkopf Professional website.

Technical Advisory Hotline: 01442 278000

Together. A passion for hair.

schwarzkopfpro.com