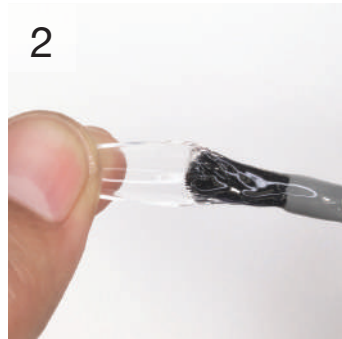


INSTRUCTIONS

Gelish Soft Gel Tips- Application



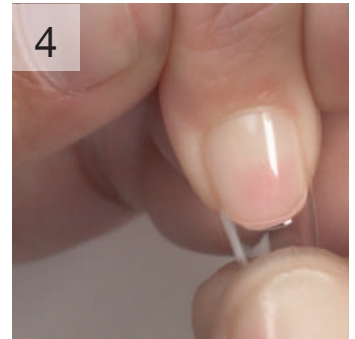
Step 1
Apply **TIP PRIMER** to natural nails.



Step 2
Apply a liberal amount of **SOFT GEL TIP ADHESIVE** to the **SOFT GEL TIP** contact area (underside of the Soft Gel Tip).



Step 3
Place Soft Gel Tip onto the nail using a rolling motion for bubble-free application. Start firmly from the cuticle area with constant pressure to the free edge. Ensure a close fit side to side completely covering the nail grooves.



Step 4
If air bubbles are present remove and reapply with step 2.



Step 5
Flash cure for 5 seconds with the **TOUCH LED LIGHT**, holding the Soft Gel Tip in place to maintain seal.



Step 6
Repeat Steps 1 – 5 for all nails.



Step 7
Cure all five fingers for 60 seconds in the **18G LED LIGHT**.



TOUCH LED LIGHT



SOFT GEL TIP PRIMER

SOFT GEL TIP ADHESIVE

gelish®
SOFT GEL