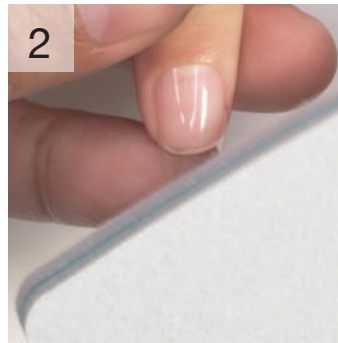


## INSTRUCTIONS

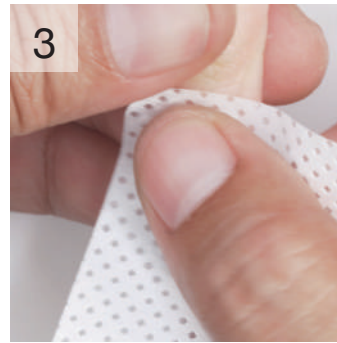
# Gelish Soft Gel Tips- Shape & Finish



**Step 1**  
Refine free edges using the **180/180 GRIT FILE**.



**Step 2**  
Gently remove the shine using the **100/180 BUFFER** or **GELISH GO FILE**.



**Step 3**  
Remove the dust using **NAIL SURFACE CLEANSE** and **WIPE IT OFF** lint-free wipes.



**Step 4**  
Choose any **GELISH** or **MORGAN TAYLOR** finishing option.



gelish®  
SOFT GEL