

**L.C.P**  
PROFESSIONNEL  
PARIS





**L.C.P**  
PROFESSIONNEL  
PARIS

## OUR STORY

LE CLUB DES PROFESSIONNELS has been the french reference of professional skin care since 1976

The brand was founded by Dr. Legrand, an aesthetic specialist,  
expert in skin beauty and a visionary:

He was the first man in the beauty industry choosing to sell his products by mail order!







For almost 45 years, the brand has developed on 3 main Pillars:

Historical professional expertise, thanks to a beauty salon knowledge legacy and belonging today to the 'Thalgo Group'.

Advice, thanks to the proper understanding of the skin and the Beauticians know-how.

A wide range of products, with a real efficacy in formulas, matching the most diverse beauty concerns and allowing to create an infinity of protocols and personalise skin care routines.

**L.C.P.**  

---

**PROFESSIONNEL**  
**PARIS**





OUR CONCEPT

L.C.P  
PROFESSIONNEL  
PARIS

FRENCH EFFICENCY

FACE GLOW

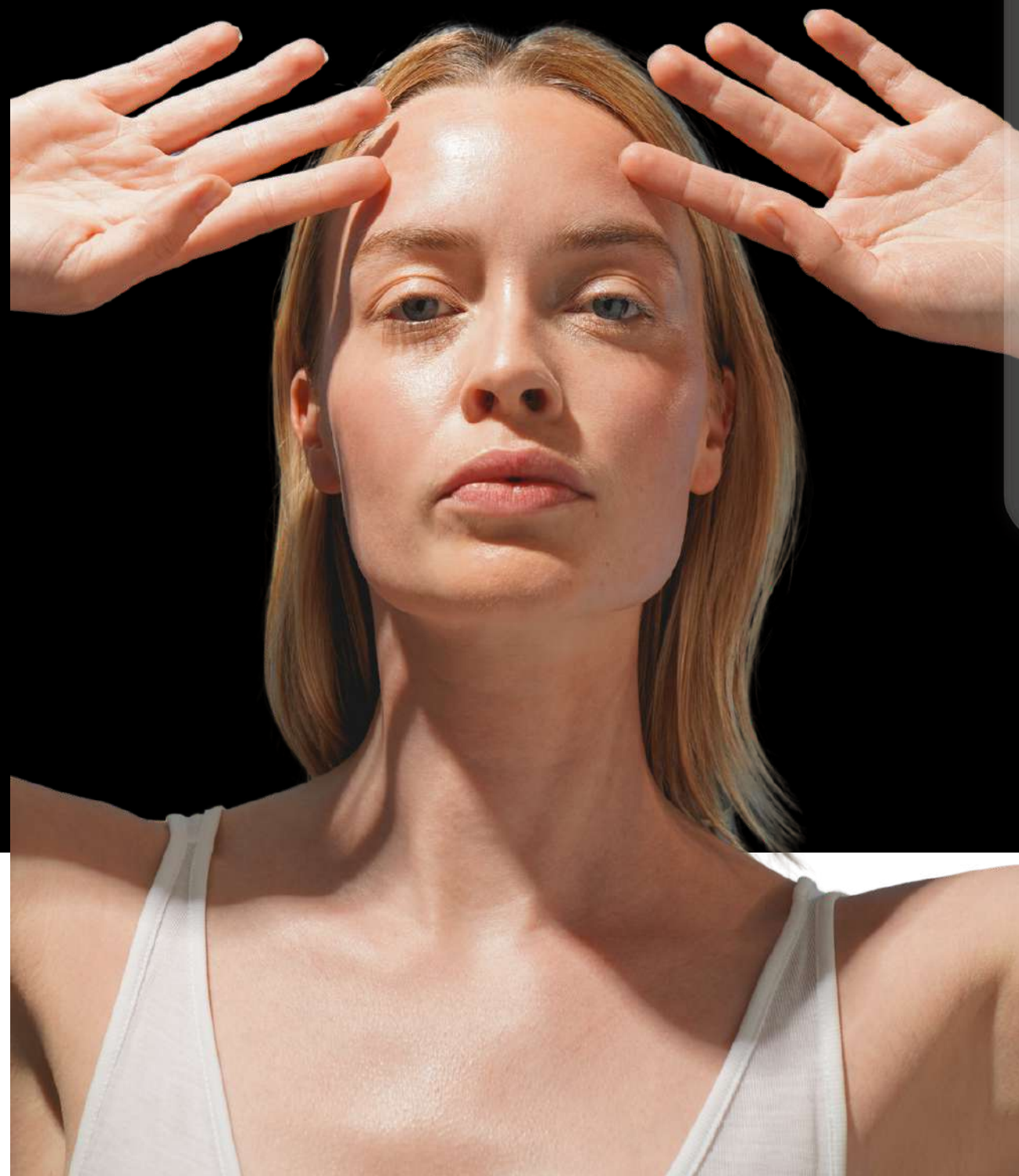
MIXOLOGY



Menu



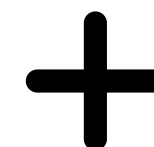
**L.C.P**  
PROFESSIONNEL  
PARIS



## French efficiency

Efficient products, high concentration ingredients made in France with the expertise of our laboratory located in Brittany

SAFETY



SENSE

**L.C.P**  
PROFESSIONNEL  
PARIS



## SAFETY

in compliance with European  
Cosmetic Regulations • high  
naturalness & vegan in many of  
product



**L.C.P**  
PROFESSIONNEL  
PARIS



## **SENSORIALITY**

Textures, light fragrances  
appreciated by consumers





# L.C.P

PROFESSIONNEL  
PARIS



## FACE GLOW

Of the professional gestures of the efficiency of LCP products and accessories to strengthen the gesture

PROFESSIONAL

RETAIL



**L.C.P**  
PROFESSIONNEL  
PARIS



A declination of a large selection of  
cabin product (large size) and with  
professional gesture.

Lcp's Mixology allows the esthetician  
to mix the product ranges according  
to the skin problem to be treated  
She will be able to make 4  
professional treatment

HYDRA FRESH



PRO AGE



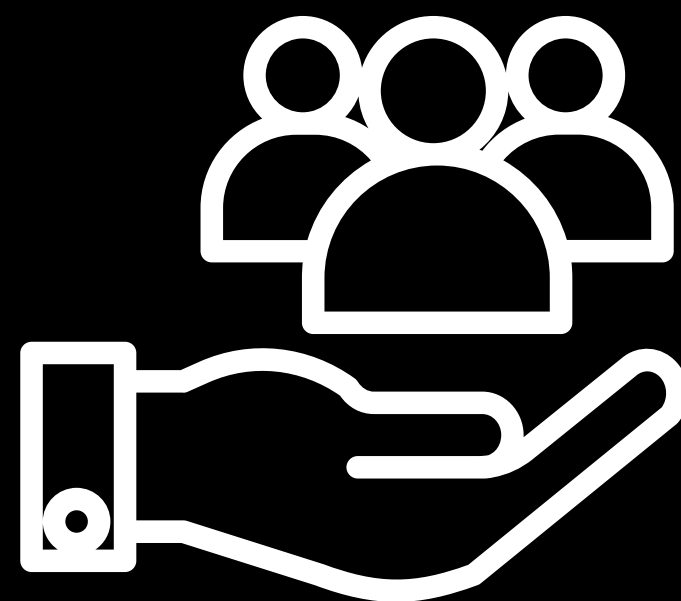
POLLUTION CONTROL



BOOST SCULPT



**L.C.P**  
PROFESSIONNEL  
PARIS



A declination of a large selection of resale references. Highly concentrated formulas with actives and sensoriality for real efficiency.

For everybody from 15 to 65 years who's looking for glow.

Every skin types and tones, every beauty concerns



# L.C.P

PROFESSIONNEL  
PARIS



## MIXOLOGY

Mix the product ranges and create a tailor-made protocol adapted to each type of skin to match all beauty concerns



# Mixology for professionnel

How to use step by step





# The L.C.P. response to skin problems

Mixology and glow

OILY SKIN	DULL SKIN	DEVITALIZED SKIN	SENSITIVE SKIN	DEHYDRATED SKIN	MATURE SKIN
Pu <sup>o</sup>	Vi <sup>c</sup>	En <sup>y</sup>	Co <sup>g</sup>	Ha <sup>+</sup>	Gl <sup>+</sup>

L.C.P.  
PROFESSIONNEL  
PARIS

OILY SKIN

Pu<sup>o</sup>

L.C.P

---

PROFESSIONNEL  
PARIS



# Oily Skin

## With or without impurities

Mixology and glow

L.C.P.

PROFESSIONNEL  
PARIS

1

CLEAN

Pu<sup>c</sup>

FOAMING  
CLEANSING GEL



2

TONIC

Es<sup>t</sup>

TONIC LOTION  
WITH COTTON EXTRACT



3

SCRUB 1

Dt<sup>x</sup>

EXFOLIATING GEL  
WITH AHAs



4

SCRUB 2

Ha<sup>+</sup>

EXFOLIATING ENZYME  
PEEL WITH  
HYALURONIC ACID



5

SERUM

En<sup>y</sup>

HYDRATING SKIN CARE  
AMPOULES  
ANTI-FATIGUE



6

MASK

Pu<sup>c</sup>

MASK  
WITH GREEN CLAY



7

CREAM

Ha<sup>+</sup>

HYDRATING SKIN  
CARE CREAM



Pu<sup>o</sup>  
PURE



## FOAMING CLEANSING GEL WITH WITCH HAZEL WATER

### Action:

This grainy purifying gel turns into a light foam to deeply cleanse the skin, leaving it feeling soft and fresh.

### Active ingredients:

- Witch hazel water: astringent and purifying action.
- Sea salt: remineralises and detoxifies.
- Sea fennel extract: restores elasticity, tones and keeps skin soft.
- Seaweed extract: detoxifies the skin and keeps the outer layers of the epidermis hydrated.

### Instructions for use:

Apply to dry skin, emulsify and rinse off.

face

"Mixologie & Glow"

### SKIN TYPE

Combination and  
oily skin

### TEXTURE

Grainy gel

### FRAGRANCE

Fresh

### QUANTITY PER TREATMENT

3 to 5 ml

### TREATMENT REFERENCE

KP20034 - 200 ml

### RESALE REFERENCE

KP20034 - 200 ml



# Est<sup>t</sup>

## ESSENTIALS



### TONIC LOTION WITH COTTON EXTRACT

#### Action:

This tonic lotion gently removes the last traces of makeup or a skin care product.

#### Active ingredients:

- Cotton extract: softens and soothes.
- Organic aloe vera juice: revitalises, soothes, smooths and protects the skin and helps keep it hydrated\*.

#### Instructions for use:

Soak a cotton pad with the lotion, apply to the skin in an upward motion and then dry.

\*the outer layers of the epidermis.

face

"Mixologie & Glow"

#### SKIN TYPE

All skin types

#### TEXTURE

Liquid

#### FRAGRANCE

Powdery

#### QUANTITY PER TREATMENT

3 to 5 ml

#### TREATMENT REFERENCE

KP20114 - 1 litre

#### RESALE REFERENCE

KP20114 - 200 ml

# Dt<sup>x</sup> DETOX



## EXFOLIATING GEL WITH AHAs

### Action:

This exfoliating peel stimulates cell renewal and refines skin texture. It brightens and evens out the complexion.

### Active ingredients:

- AHAs (fruit acids): smooth skin texture, stimulate cell renewal and restore radiance to the complexion while boosting hydration to the outer layers of the epidermis.

### Instructions for use:

Apply a medium thick layer with a brush, avoiding the eye area. Leave on for 5 to 10 minutes. Create an emulsion with wet hands and then rinse off with sponges.

face

"Mixologie & Glow"

### SKIN TYPE

All skin types

### TEXTURE

Grain-free gel

### FRAGRANCE

Floral

### QUANTITY PER TREATMENT

10 ml

### TREATMENT REFERENCE

KP20060 - 200 ml tube

### RESALE REFERENCE

KP20025 – 50 ml tube



# Ha<sup>+</sup>

HYALURONIC



## EXFOLIATING ENZYME PEEL WITH HYALURONIC ACID

### Action:

This grain-free exfoliating gel gently removes dead skin cells leaving skin smoother and more hydrated.

### Active ingredients:

- Enzyme active ingredient: keratolytic action; smooths the skin and stimulates cell renewal without redness or tingling.
- Hyaluronic acid: naturally present in the skin and renowned for its ability to moisturise and maintain optimal hydration in the outer layers of the epidermis.

### Instructions for use:

Apply a medium thick layer with a brush, avoiding the eye area. Leave on for 5 to 10 minutes. Create an emulsion with wet hands and then rinse off.

face

"Mixologie & Glow"

### SKIN TYPE

All skin types

### TEXTURE

Grain-free gel

### FRAGRANCE

Fresh

### QUANTITY PER TREATMENT

3 ml

### TREATMENT REFERENCE

KP20115 - 200 ml tube

### RESALE REFERENCE

KP20116 – 50 ml tube

# En<sup>y</sup> ENERGY



## HYDRATING SKIN CARE AMPOULES ANTI-FATIGUE

### Action:

This treatment deposits a smooth film on the surface of the epidermis for an instant beauty boost and excellent makeup base.

### Active ingredients:

- Hyaluronic acid: naturally present in the skin and renowned for its ability to moisturise and maintain optimal hydration in the outer layers of the epidermis.
- Rootstock extract: smooths and moisturises the outer layers of the epidermis.
- Baobab pulp extract: plumps, brightens and boosts radiance.
- Vegetable glycerine: moisturises and softens the skin.

### Instructions for use:

Apply on its own or over a cream if the skin is very dry.

face

### SKIN TYPE

All skin types

### TEXTURE

Aqueous

### FRAGRANCE

Neutral

### QUANTITY PER TREATMENT

3 ml

### TREATMENT REFERENCE

KP20006 - 10 x 3 ml

"Mixologie & Glow"



## HYDRATING SKIN CARE CREAM WITH HYALURONIC ACID

# Ha<sup>+</sup>

HYALURONIC



### Action:

Containing two types of hyaluronic acid with a low and high molecular weight, this light cream keeps the outer layers of the epidermis hydrated while toning, smoothing and plumping the skin.

### Active ingredients:

- High molecular weight hyaluronic acid: protects the skin from external aggressors and holds water on the skin's surface.
- Low molecular weight hyaluronic acid: improves skin tone and stimulates cell cohesion.

### Instructions for use:

Apply to the face and neck, avoiding the eye area.

face

"Mixologie & Glow"

### SKIN TYPE

All skin types

### TEXTURE

Cream

### FRAGRANCE

Floral

### QUANTITY PER TREATMENT

1 ml

### TREATMENT REFERENCE

KP20112 - 200 ml

### RESALE REFERENCE

KP20123 – 50 ml

Pu<sup>o</sup>  
PURE



## MASK WITH GREEN CLAY

### Action:

This purifying, normalising mask revitalises combination and oily skin. Toxins are eliminated and the complexion appears matt and even.

### Active ingredients:

- Green clay (montmorillonite): purifies and mattifies the skin, absorbs impurities, reduces imperfections and tightens the pores.
- White clay (kaolin): slightly exfoliating, promotes cell renewal, soothes and repairs.
- Calendula extract: soothes the skin and improves microcirculation.
- Allantoin: softens and soothes.
- Laminaria seaweed extract: revitalises and protects.

### Instructions for use:

Apply a thick layer with a brush. Leave on for 10 to 15 minutes and then rinse off.

face

"Mixologie & Glow"

### SKIN TYPE

Combination and  
oily skin

### TEXTURE

Mud mask

### FRAGRANCE

Fresh

### QUANTITY PER TREATMENT

10 ml

### TREATMENT REFERENCE

KP20091 - 200 ml tube

### RESALE REFERENCE

KP20037 – 50 ml



DULL SKIN

Vic

L.C.P

---

PROFESSIONNEL  
PARIS

# Dull skin

Revive the radiance of dull  
and devitalized skin

Mixology and glow

L.C.P.  
PROFESSIONNEL  
PARIS

1

CLEAN

Es<sup>t</sup>

CLEANSING MILK  
WITH CALENDULA EXTRACT



2

TONIC

Es<sup>t</sup>

TONIC LOTION  
WITH COTTON EXTRACT



3

SCRUB 1

Dt<sup>x</sup>

EXFOLIATING GEL  
WITH AHAs



4

SERUM

En<sup>y</sup>

HYDRATING SKIN CARE  
AMPOULES  
ANTI-FATIGUE



5

MASK

Vi<sup>c</sup>

ALGINATE RADIANCE  
MASK WITH VITAMIN C



6

CREAM

Vi<sup>c</sup>

RADIANCE SKIN CARE  
CREAM  
WITH VITAMIN C





# Est<sup>t</sup> ESSENTIALS



## CLEANSING MILK WITH CALENDULA EXTRACT

### Action:

Gently eliminates impurities and all traces of makeup.

### Active ingredients:

- Calendula extract: soothes and softens sensitive and delicate skin.
- Allantoin: softens and repairs.

### Instructions for use:

Put some of the milk on a cotton pad or in the palm of your hand and apply in a circular motion, avoiding the eye area. Rinse off with sponges. Remove any last traces of makeup with a lotion.

face

"Mixologie & Glow"

### SKIN TYPE

All skin types

### TEXTURE

Milk

### FRAGRANCE

Floral

### QUANTITY PER TREATMENT

5 ml

### TREATMENT REFERENCE

KP20093 - 1 litre

### RESALE REFERENCE

KP20125 - 200 ml

# Est<sup>t</sup>

## ESSENTIALS



### TONIC LOTION WITH COTTON EXTRACT

#### Action:

This tonic lotion gently removes the last traces of makeup or a skin care product.

#### Active ingredients:

- Cotton extract: softens and soothes.
- Organic aloe vera juice: revitalises, soothes, smooths and protects the skin and helps keep it hydrated\*.

#### Instructions for use:

Soak a cotton pad with the lotion, apply to the skin in an upward motion and then dry.

\*the outer layers of the epidermis.

face

"Mixologie & Glow"

#### SKIN TYPE

All skin types

#### TEXTURE

Liquid

#### FRAGRANCE

Powdery

#### QUANTITY PER TREATMENT

3 to 5 ml

#### TREATMENT REFERENCE

KP20114 - 1 litre

#### RESALE REFERENCE

KP20114 - 200 ml



# Dt<sup>x</sup> DETOX



## EXFOLIATING GEL WITH AHAs

### Action:

This exfoliating peel stimulates cell renewal and refines skin texture. It brightens and evens out the complexion.

### Active ingredients:

- AHAs (fruit acids): smooth skin texture, stimulate cell renewal and restore radiance to the complexion while boosting hydration to the outer layers of the epidermis.

### Instructions for use:

Apply a medium thick layer with a brush, avoiding the eye area. Leave on for 5 to 10 minutes. Create an emulsion with wet hands and then rinse off with sponges.

face

"Mixologie & Glow"

### SKIN TYPE

All skin types

### TEXTURE

Grain-free gel

### FRAGRANCE

Floral

### QUANTITY PER TREATMENT

10 ml

### TREATMENT REFERENCE

KP20060 - 200 ml tube

### RESALE REFERENCE

KP20025 – 50 ml tube

# En<sup>y</sup>

## ENERGY



## HYDRATING SKIN CARE AMPOULES

### ANTI-FATIGUE

#### Action:

This treatment deposits a smooth film on the surface of the epidermis for an instant beauty boost and excellent makeup base.

#### Active ingredients:

- Hyaluronic acid: naturally present in the skin and renowned for its ability to moisturise and maintain optimal hydration in the outer layers of the epidermis.
- Rootstock extract: smooths and moisturises the outer layers of the epidermis.
- Baobab pulp extract: plumps, brightens and boosts radiance.
- Vegetable glycerine: moisturises and softens the skin.

#### Instructions for use:

Apply on its own or over a cream if the skin is very dry.

face

#### SKIN TYPE

All skin types

#### TEXTURE

Aqueous

#### FRAGRANCE

Neutral

#### QUANTITY PER TREATMENT

3 ml

#### TREATMENT REFERENCE

KP20006 - 10 x 3 ml

"Mixologie & Glow"



# Vi<sup>c</sup> VITAMIN C



## ALGATE RADIANCE MASK WITH VITAMIN C

### Action:

This alginate mask moisturises\* the outer layers of the epidermis while reducing redness\* and irritation. Leaves the complexion bright and radiant.

### Active ingredients:

- Alginate and calcium salt: give the mask its texture and promote osmosis between the mask and skin.
- Vitamin C (ascorbic acid): antioxidant, helps prevent the first signs of ageing, fights against antioxidative stress, anti free-radical, brightens the complexion.
- Blueberry extract: activates microcirculation and improves the tone of blood capillaries.

### Instructions for use:

Use a spatula to vigorously mix the contents of the sachet with 90 ml of room-temperature water. Apply a thick layer to the face with a spatula and leave on for 15 to 20 minutes. Remove by peeling off.

face

"Mixologie & Glow"

### SKIN TYPE

All skin types

### TEXTURE

Alginate

### FRAGRANCE

Fruity

### QUANTITY PER TREATMENT

30 g

### TREATMENT REFERENCE

KP20050  
30 g sachet

# Vi<sup>c</sup> VITAMIN C



## RADIANCE CREAM MASK WITH VITAMIN C

### Action:

This mask restores radiance and vitality to the skin, leaving the complexion clear and even. It stimulates dull, tired skin and gives it a real energy boost.

### Active ingredients:

- Vitamin C (ascorbic acid): antioxidant, helps prevent the first signs of ageing, fights against antioxidative stress, anti free-radical, brightens the complexion.
- White clay (kaolin): soothes and repairs.

### Instructions for use:

Use a brush to apply a medium thick coat of the mask to the face and neck. Leave on for 10 to 15 minutes and then rinse off. Can be used in the eye area.

face

"Mixologie & Glow"

### SKIN TYPE

All skin types

### TEXTURE

Cream

### FRAGRANCE

Fruity

### QUANTITY PER TREATMENT

10 ml

### TREATMENT REFERENCE

KP20113 - 200 ml

### RESALE REFERENCE

KP20139 – 50 ml



# Vi<sup>c</sup> VITAMIN C



## RADIANCE SKIN CARE CREAM WITH VITAMIN C

### Action:

This cream revitalises and protects the skin, leaving it bright and radiant.

### Active ingredients:

- Vitamin C (ascorbic acid): antioxidant, helps prevent the first signs of ageing, fights against antioxidative stress, anti free-radical, brightens the complexion.
- Apricot kernel oil: rich in vitamin E to improve cell renewal and in antioxidant vitamin A.
- Jojoba oil: emollient, prevents skin dehydration.
- Orange extract: delivers essential nutrients to the skin.

### Instructions for use:

Apply to the face and neck, avoiding the eye area.

face

"Mixologie & Glow"

### SKIN TYPE

All skin types

### TEXTURE

Emulsion

### FRAGRANCE

Fruity

### QUANTITY PER TREATMENT

1 ml

### TREATMENT REFERENCE

KP20137 - 200 ml

### RESALE REFERENCE

KP20141 – 50 ml

SENSITIVE SKIN

Co<sup>g</sup>

L.C.P

---

PROFESSIONNEL  
PARIS

# Sensitive skin

## Soothe and moisturise sensitive skin

Mixology and glow

**L.C.P.**  
PROFESSIONNEL  
PARIS

1

CLEAN

Est

MICELLAR WATER  
WITH JASMINE FLORAL WATER



2

TONIC

Est

TONIC LOTION  
WITH COTTON EXTRACT



3

SCRUB

Co<sup>g</sup>

CREAM SCRUB  
GENTLE



4

SERUM

Ha<sup>+</sup>

BOOSTER SERUM / SKIN CARE  
AMPOULES  
WITH HYALURONIC ACID



5

MASK

Co<sup>g</sup>

CREAM MASK  
WITH CALENDULA  
EXTRACT



6

CREAM

Co<sup>g</sup>

SOOTHING CREAM  
WITH CALENDULA EXTRACT





# Est<sup>t</sup> ESSENTIALS



## MICELLAR WATER WITH JASMINE FLORAL WATER

### Action:

This no-rinse cleansing lotion leaves the skin feeling soft, fresh and very comfortable.

### Active ingredients:

- Jasmine floral water: tones, revitalises, soothes and eliminates impurities.
- Aloe vera: soothes, smooths and protects the skin and helps keep it hydrated.
- Vegetable glycerine: maintains skin hydration.
- Micelles: trap impurities and remove them in the aqueous phase.

### Instructions for use:

Soak a cotton pad with the lotion. Apply to the skin in a gentle upward motion. No need to rinse.

face

"Mixologie & Glow"

### SKIN TYPE

All skin types

### TEXTURE

Liquid

### FRAGRANCE

Floral

### QUANTITY PER TREATMENT

5 ml

### TREATMENT REFERENCE

KP20092 - 500 ml

### RESALE REFERENCE

KP20126 - 200 ml

# Est<sup>t</sup>

## ESSENTIALS



### TONIC LOTION WITH COTTON EXTRACT

#### Action:

This tonic lotion gently removes the last traces of makeup or a skin care product.

#### Active ingredients:

- Cotton extract: softens and soothes.
- Organic aloe vera juice: revitalises, soothes, smooths and protects the skin and helps keep it hydrated\*.

#### Instructions for use:

Soak a cotton pad with the lotion, apply to the skin in an upward motion and then dry.

\*the outer layers of the epidermis.

face

"Mixologie & Glow"

#### SKIN TYPE

All skin types

#### TEXTURE

Liquid

#### FRAGRANCE

Powdery

#### QUANTITY PER TREATMENT

3 to 5 ml

#### TREATMENT REFERENCE

KP20114 - 1 litre

#### RESALE REFERENCE

KP20114 - 200 ml

# Co<sup>g</sup> COCOONING



## CREAM SCRUB GENTLE

### Action:

This gentle exfoliating scrub removes dead skin cells, refines skin texture and boosts radiance.

### Active ingredients:

- Xanthan: exfoliating action.
- Talc: protects and exfoliates.
- Vegetable glycerine: moisturises and softens the skin.

### Instructions for use:

Apply a very thin layer to the face with a brush, avoiding the eye area, and allow to dry for a few minutes before rubbing in a circular motion. Rinse off.

face

"Mixologie & Glow"

### SKIN TYPE

All skin types

### TEXTURE

Cream

### FRAGRANCE

Neutral

### QUANTITY PER TREATMENT

2.5 ml

### TREATMENT REFERENCE

KP20042 - 200 ml tube

### RESALE REFERENCE

KP20032 – 50 ml tube



# Ha<sup>+</sup> HYALURONIC



## BOOSTER SERUM / SKIN CARE AMPOULES WITH HYALURONIC ACID

### Action:

With its excellent hydrating power, this treatment visibly plumps and smooths the skin.

### Active ingredients:

- Hyaluronic acid: naturally present in the skin and renowned for its ability to maintain optimal hydration in the outer layers of the epidermis.
- Glycerine: maintains skin hydration.
- Cotton extract: softens and soothes.

### Instructions for use:

As a treatment: apply before the massage, mask and/or post-treatment cream. Use effleurage strokes to rub in the serum until it is fully absorbed.

Resale: apply before the cream.

Ampoules → Reserved for the beautician

Bottle → For all clients who want a professional concentration treatment at home

face

"Mixologie & Glow"

### SKIN TYPE

All skin types

### TEXTURE

Aqueous gel

### FRAGRANCE

Neutral

### QUANTITY PER TREATMENT

3 ml

### TREATMENT REFERENCE

KP20007 - 10 x 3 ml

### RESALE REFERENCE

KP20022  
30 ml bottle of serum

Co<sup>g</sup>  
COCOONING



## CREAM MASK WITH CALENDULA EXTRACT

### Action:

This mask softens, soothes and moisturises the outer layers of the epidermis.

### Active ingredients:

- Calendula extract: soothes and softens sensitive and delicate skin.
- White clay (kaolin): slightly exfoliating, promotes cell renewal, soothes and repairs.

### Instructions for use:

Apply a thick layer with a brush. Leave on for 10 to 15 minutes and then rinse off. Can be used in the eye area.

face

"Mixologie & Glow"

### SKIN TYPE

All skin types

### TEXTURE

Cream

### FRAGRANCE

Fruity

### QUANTITY PER TREATMENT

10 ml

### TREATMENT REFERENCE

KP20088 - 200 ml tube

NEW

Co<sup>g</sup>  
COCOONING



[ DERMATOLOGICALLY  
TESTED ]

## SOOTHING CREAM WITH CALENDULA EXTRACT

### Action :

A perfect ally for sensitive skin, this moisturising cream soothes and reduces redness. Sensations of tightness are reduced. The skin is softer and nourished.

*96%\* of volunteers said their skin felt soothed and softer, with feelings of tightness reduced. 92%\* found that redness was reduced. \*Use test carried out on 25 volunteers for 28 days with twice-daily application.*

### Active ingredients :

- Calendula extract: soothes and protects reactive and delicate skin.
- Shea butter: rich in vitamin E and F, this ingredient is known for its nourishing, repairing and softening properties.
- Glycerin: retains water in the upper layers of the epidermis to limit dehydration.

### Use:

Apply to the face and neck with light strokes at the end of the treatment.

Resale: Apply this cream morning and evening to a thoroughly cleansed and dried face and neck.

face

« Mixologie & Glow »

### SKIN TYPE

Sensitive skins

### TEXTURE

Slight cream

### FRAGRANCE

Soft

### QUANTITY PER TREATMENT

1ml

### TREATMENT REFERENCE

KP22006 – Tube 200ml  
VP22002- Tube 50ml



DEHYDRATED SKIN

Ha<sup>+</sup>

L.C.P

---

PROFESSIONNEL  
PARIS

Dehydrated skin

Moisturise and plump up skin  
lacking in water

Mixology and glow

L.C.P.

PROFESSIONNEL  
PARIS

1 CLEAN

Es<sup>t</sup>

CLEANSING MILK  
WITH CALENDULA EXTRACT



2 TONIC

Es<sup>t</sup>

TONIC LOTION  
WITH COTTON EXTRACT



3 SCRUB

Ha<sup>+</sup>

EXFOLIATING ENZYME PEEL  
WITH HYALURONIC ACID



4 SERUM

Ha<sup>+</sup>

BOOSTER SERUM / SKIN CARE  
AMPOULES  
WITH HYALURONIC ACID



5 MASK

Ha<sup>+</sup>

SHAKER MASK  
WITH HYALURONIC ACID



6 CREAM

Ha<sup>+</sup>

HYDRATING SKIN CARE CREAM  
WITH HYALURONIC ACID





# Est<sup>t</sup> ESSENTIALS



## CLEANSING MILK WITH CALENDULA EXTRACT

### Action:

Gently eliminates impurities and all traces of makeup.

### Active ingredients:

- Calendula extract: soothes and softens sensitive and delicate skin.
- Allantoin: softens and repairs.

### Instructions for use:

Put some of the milk on a cotton pad or in the palm of your hand and apply in a circular motion, avoiding the eye area. Rinse off with sponges. Remove any last traces of makeup with a lotion.

face

"Mixologie & Glow"

### SKIN TYPE

All skin types

### TEXTURE

Milk

### FRAGRANCE

Floral

### QUANTITY PER TREATMENT

5 ml

### TREATMENT REFERENCE

KP20093 - 1 litre

### RESALE REFERENCE

KP20125 - 200 ml



# Est<sup>t</sup>

## ESSENTIALS



### TONIC LOTION WITH COTTON EXTRACT

#### Action:

This tonic lotion gently removes the last traces of makeup or a skin care product.

#### Active ingredients:

- Cotton extract: softens and soothes.
- Organic aloe vera juice: revitalises, soothes, smooths and protects the skin and helps keep it hydrated\*.

#### Instructions for use:

Soak a cotton pad with the lotion, apply to the skin in an upward motion and then dry.

\*the outer layers of the epidermis.

face

"Mixologie & Glow"

#### SKIN TYPE

All skin types

#### TEXTURE

Liquid

#### FRAGRANCE

Powdery

#### QUANTITY PER TREATMENT

3 to 5 ml

#### TREATMENT REFERENCE

KP20114 - 1 litre

#### RESALE REFERENCE

KP20114 - 200 ml

# Ha<sup>+</sup>

HYALURONIC



## EXFOLIATING ENZYME PEEL WITH HYALURONIC ACID

### Action:

This grain-free exfoliating gel gently removes dead skin cells leaving skin smoother and more hydrated.

### Active ingredients:

- Enzyme active ingredient: keratolytic action; smooths the skin and stimulates cell renewal without redness or tingling.
- Hyaluronic acid: naturally present in the skin and renowned for its ability to moisturise and maintain optimal hydration in the outer layers of the epidermis.

### Instructions for use:

Apply a medium thick layer with a brush, avoiding the eye area. Leave on for 5 to 10 minutes. Create an emulsion with wet hands and then rinse off.

face

"Mixologie & Glow"

### SKIN TYPE

All skin types

### TEXTURE

Grain-free gel

### FRAGRANCE

Fresh

### QUANTITY PER TREATMENT

3 ml

### TREATMENT REFERENCE

KP20115 - 200 ml tube

### RESALE REFERENCE

KP20116 – 50 ml tube

# Ha<sup>+</sup> HYALURONIC



## BOOSTER SERUM / SKIN CARE AMPOULES WITH HYALURONIC ACID

### Action:

With its excellent hydrating power, this treatment visibly plumps and smooths the skin.

### Active ingredients:

- Hyaluronic acid: naturally present in the skin and renowned for its ability to maintain optimal hydration in the outer layers of the epidermis.
- Glycerine: maintains skin hydration.
- Cotton extract: softens and soothes.

### Instructions for use:

As a treatment: apply before the massage, mask and/or post-treatment cream. Use effleurage strokes to rub in the serum until it is fully absorbed.

Resale: apply before the cream.

Ampoules → Reserved for the beautician

Bottle → For all clients who want a professional concentration treatment at home

face

"Mixologie & Glow"

### SKIN TYPE

All skin types

### TEXTURE

Aqueous gel

### FRAGRANCE

Neutral

### QUANTITY PER TREATMENT

3 ml

### TREATMENT REFERENCE

KP20007 - 10 x 3 ml

### RESALE REFERENCE

KP20022  
30 ml bottle of serum



# Ha<sup>+</sup>

## HYALURONIC



### SHAKER MASK WITH HYALURONIC ACID

#### Action:

This mask helps boost hydration in the outer layers of the epidermis, keeping skin soft and supple.

#### Active ingredients:

- Alginate and calcium salt: give the mask its texture and promote osmosis between the mask and skin.
- Hyaluronic acid: naturally present in the skin and renowned for its ability to maintain optimal hydration in the outer layers of the epidermis.

#### Instructions for use:

Pour 100 ml of room-temperature water into the shaker, add the powder and close the lid. Mix vigorously for a few seconds. Apply a thick layer with a spatula. Leave on for 15 to 20 minutes. Remove by peeling off.

face

"Mixologie & Glow"

#### SKIN TYPE

All skin types

#### TEXTURE

Alginate

#### FRAGRANCE

Neutral

#### QUANTITY PER TREATMENT

25 g

#### TREATMENT REFERENCE

KP20056  
25 g sachet

# Ha<sup>+</sup>

HYALURONIC



## HYDRATING SKIN CARE CREAM WITH HYALURONIC ACID

### Action:

Containing two types of hyaluronic acid with a low and high molecular weight, this light cream keeps the outer layers of the epidermis hydrated while toning, smoothing and plumping the skin.

### Active ingredients:

- High molecular weight hyaluronic acid: protects the skin from external aggressors and holds water on the skin's surface.
- Low molecular weight hyaluronic acid: improves skin tone and stimulates cell cohesion.

### Instructions for use:

Apply to the face and neck, avoiding the eye area.

face

"Mixologie & Glow"

### SKIN TYPE

All skin types

### TEXTURE

Cream

### FRAGRANCE

Floral

### QUANTITY PER TREATMENT

1 ml

### TREATMENT REFERENCE

KP20112 - 200 ml

### RESALE REFERENCE

KP20123 – 50 ml

MATURE SKIN

GI<sup>+</sup>

L.C.P

---

PROFESSIONNEL  
PARIS



# MATURE SKIN

smoothing, moisturising,  
firming

Mixology and glow

1 CLEAN **Es<sup>1</sup>**

CLEANSING MILK WITH CALENDULA EXTRACT



2 TONIC **Es<sup>1</sup>**

TONIC LOTION WITH COTTON EXTRACT



3 SCRUB **Dt<sup>x</sup>**

EXFOLIATING ENZYME PEEL WITH  
HYALURONIC ACID



4 SERUM **GI<sup>+</sup>**

BOOSTER SERUM / SKIN CARE AMPOULES  
WITH COLLAGEN



5 MASSAGE **GI<sup>+</sup>**

HONEY MASSAGE BALM  
WITH GOLD AND CAVIAR EXTRACT



6 MASK **GI<sup>+</sup>**

COLLAGEN SHEET



7 SERUM **GI<sup>+</sup>**

BOOSTER SERUM / SKIN CARE AMPOULES  
WITH COLLAGEN



8 EYE  
CONTOUR **GI<sup>+</sup>**

ANTI-AGEING SMOOTHING EYE CONTOUR  
WITH PEPTIDE



9 CREAM **GI<sup>+</sup>**

ANTI-AGEING CREAM FOR INTENSE LIFT  
WITH PEPTIDES



# Est<sup>t</sup> ESSENTIALS



## CLEANSING MILK WITH CALENDULA EXTRACT

### Action:

Gently eliminates impurities and all traces of makeup.

### Active ingredients:

- Calendula extract: soothes and softens sensitive and delicate skin.
- Allantoin: softens and repairs.

### Instructions for use:

Put some of the milk on a cotton pad or in the palm of your hand and apply in a circular motion, avoiding the eye area. Rinse off with sponges. Remove any last traces of makeup with a lotion.

face

"Mixologie & Glow"

### SKIN TYPE

All skin types

### TEXTURE

Milk

### FRAGRANCE

Floral

### QUANTITY PER TREATMENT

5 ml

### TREATMENT REFERENCE

KP20093 - 1 litre

### RESALE REFERENCE

KP20125 - 200 ml



# Est<sup>t</sup>

## ESSENTIALS



### TONIC LOTION WITH COTTON EXTRACT

#### Action:

This tonic lotion gently removes the last traces of makeup or a skin care product.

#### Active ingredients:

- Cotton extract: softens and soothes.
- Organic aloe vera juice: revitalises, soothes, smooths and protects the skin and helps keep it hydrated\*.

#### Instructions for use:

Soak a cotton pad with the lotion, apply to the skin in an upward motion and then dry.

\*the outer layers of the epidermis.

face

"Mixologie & Glow"

#### SKIN TYPE

All skin types

#### TEXTURE

Liquid

#### FRAGRANCE

Powdery

#### QUANTITY PER TREATMENT

3 to 5 ml

#### TREATMENT REFERENCE

KP20114 - 1 litre

#### RESALE REFERENCE

KP20114 - 200 ml



# Dt<sup>x</sup> DETOX



## EXFOLIATING GEL WITH AHAs

### Action:

This exfoliating peel stimulates cell renewal and refines skin texture. It brightens and evens out the complexion.

### Active ingredients:

- AHAs (fruit acids): smooth skin texture, stimulate cell renewal and restore radiance to the complexion while boosting hydration to the outer layers of the epidermis.

### Instructions for use:

Apply a medium thick layer with a brush, avoiding the eye area. Leave on for 5 to 10 minutes. Create an emulsion with wet hands and then rinse off with sponges.

face

"Mixologie & Glow"

### SKIN TYPE

All skin types

### TEXTURE

Grain-free gel

### FRAGRANCE

Floral

### QUANTITY PER TREATMENT

10 ml

### TREATMENT REFERENCE

KP20060 - 200 ml tube

### RESALE REFERENCE

KP20025 – 50 ml tube

**GI<sup>+</sup>**  
GLOBAL



## BOOSTER SERUM / SKIN CARE AMPOULES WITH COLLAGEN

### Action:

This marine collagen-based treatment helps the skin maintain optimal hydration\*, firmness and tone.  
\*of the outer layers of the epidermis

### Active ingredients:

- Marine collagen: tones and moisturises\* the skin, making it feel soft and firm.  
\*the outer layers of the epidermis

### Instructions for use:

As a treatment: apply before the massage, mask and/or post-treatment cream. Use effleurage to rub in the serum until it is fully absorbed.

Resale: apply before the cream.

Ampoules → Reserved for the beautician

Bottle → For all clients who want a professional concentration treatment at home

face

"Mixologie & Glow"

### SKIN TYPE

All skin types

### TEXTURE

Aqueous gel

### FRAGRANCE

Neutral

### QUANTITY PER TREATMENT

3 ml

### TREATMENT REFERENCE

KP20008 - 10 x 3 ml

### RESALE REFERENCE

KP20027  
30 ml bottle of serum

**GI<sup>+</sup>**  
GLOBAL



## HONEY MASSAGE BALM WITH GOLD AND CAVIAR EXTRACT

### Action:

This honey balm turns into a massage oil with excellent gliding power. It has emollient, antioxidant and remineralising properties.

### Active ingredients:

- Gold: antioxidant, brightens the complexion.
- Caviar extract: improves skin elasticity and cell renewal; remineralises and smooths the skin.
- Grapeseed oil: regenerates and restructures the epidermis.
- Glycerine: helps keep the outer layers of the epidermis hydrated.

### Instructions for use:

Put a small amount of honey massage balm in your hand and warm it to turn it into an oil. Massage into the face. Add water to create a milky emulsion. Rinse off.

face

"Mixologie & Glow"

### SKIN TYPE

Dry skin

### TEXTURE

Creamy balm

### FRAGRANCE

Floral

### QUANTITY PER TREATMENT

3 ml

### TREATMENT REFERENCE

KP20128  
175 ml tub





## COLLAGEN SHEET CLASSIC

### Action:

This treatment (formulated with 92% collagen) stimulates cell renewal, tones the skin and helps prevent skin ageing.

\*the outer layers of the epidermis.

### Active ingredients:

- Soluble collagen: improves cell renewal, tones and softens while helping to prevent skin ageing. Smooths and intensely moisturises the outer layers of the epidermis.
- Collagen fibres: give the mask its texture and ability to form a film.

### Instructions for use:

Cut a hole for the nose in advance and then place the sheet over the face. Use a cotton pad or sponge to soak the sheet with water. The sheet should follow the contours of the face perfectly with no "bubbles". Leave on for 20 minutes. Remove by peeling off.

face

"Mixologie & Glow"

### SKIN TYPE

All skin types

### TEXTURE

Collagen sheet

### FRAGRANCE

Neutral

### QUANTITY PER TREATMENT

1 sheet

### TREATMENT REFERENCE

KP20045  
1 sheet



**GI<sup>+</sup>**  
GLOBAL



## COLLAGEN SHEET WITH HYALURONIC ACID

### Action:

The hyaluronic acid contained in this mask combined with its 92% collagen content improve hydration\* while smoothing out fine lines and wrinkles for instantly plumper skin.

\*of the outer layers of the epidermis.

### Active ingredients:

- Hyaluronic acid: naturally present in the skin and renowned for its ability to moisturise and maintain optimal hydration in the outer layers of the epidermis.
- Soluble collagen: improves cell renewal, tones and softens while helping to prevent skin ageing. Smooths and intensely moisturises the outer layers of the epidermis.
- Collagen fibres: give the mask its texture and ability to form a film.

### Instructions for use:

Cut a hole for the nose in advance and then place the sheet over the face. Use a cotton pad or sponge to soak the sheet with water. The sheet should follow the contours of the face perfectly with no "bubbles". Leave on for 20 minutes. Remove by peeling off.

face

"Mixologie & Glow"

### SKIN TYPE

All skin types

### TEXTURE

Collagen sheet

### FRAGRANCE

Neutral

### QUANTITY PER TREATMENT

1 sheet

### TREATMENT REFERENCE

KP20121 – 1 sheet

**GI<sup>+</sup>**  
GLOBAL



## COLLAGEN SHEET WITH CAVIAR EXTRACT

### Action:

This mask contains caviar extract and 91% collagen to moisturise and meet the needs of mature skin.

### Active ingredients:

- Soluble collagen: improves cell renewal, tones and softens while helping to prevent skin ageing. Smooths and intensely moisturises the outer layers of the epidermis.
- Collagen fibres: give the mask its texture and ability to form a film.
- Caviar extract: improves skin elasticity and cell renewal; remineralises and smooths the skin.

### Instructions for use:

Cut a hole for the nose in advance and then place the sheet over the face. Use a cotton pad or sponge to soak the sheet with water. The sheet should follow the contours of the face perfectly with no "bubbles". Leave on for 20 minutes. Remove by peeling off.

face

"Mixologie & Glow"

### SKIN TYPE

All skin types

### TEXTURE

Collagen sheet

### FRAGRANCE

Neutral

### QUANTITY PER TREATMENT

1 sheet

### TREATMENT REFERENCE

KP20122 – 1 sheet



NEW

GI<sup>+</sup>  
GLOBAL



(DERMATOLOGICALLY TESTED  
[SUITABLE FOR PREGNANT &  
BREASTFEEDING WOMEN])

## ANTI-AGEING CREAM FOR INTENSE LIFT WITH PEPTIDES

### Action :

This revolutionary new peptide-enriched cream has been specially formulated to fight the signs of ageing globally: the appearance of wrinkles is reduced for firmer, smoother skin.

**96%\*** of volunteers found their skin visibly smoother, **92%\*** firmer and plumped up, and **84%\*** both large and small wrinkles were less visible. \*Use test carried out on 25 volunteers for 28 days, applying twice daily.

### Active ingredients :

- Brede Mafane flower extract: Helps to reduce the formation of facial wrinkles and reduces the wrinkled appearance of the face. Also has a targeted action on expression lines.
- Peptides: Boost collagen production and protect it from degradation. Anti-ageing action, improves firmness.

### Use:

Apply to the face and neck with light strokes at the end of the treatment. In case of contact with the eyes, rinse thoroughly with water.

Resale: Apply this cream morning and evening to a thoroughly cleansed and dried face and neck.

### SKIN TYPE

All skin types

### TEXTURE

Slight cream

### FRAGRANCE

Orange blossom

### QUANTITY PER TREATMENT

1ml

### RESALE REFERENCE

KP20117-200ml

### TREATMENT/RESALE REFERENCE

VP22001-50ml

face

« Mixologie & Glow »

NEW

GI<sup>+</sup>  
GLOBAL



(DERMATOLOGICALLY TESTED)

## ANTI-AGEING SMOOTHING EYE CONTOUR WITH PEPTIDE

### Action :

This smoothing eye contour targets the signs of tiredness and aging. Eye wrinkles, puffiness and dark circles are reduced for a visibly younger and more radiant look.

### Active Ingredients:

- Brède mafane flower extract reduces the appearance of wrinkles and particularly targets expression lines of the crow's feet for smoother skin.
- Argan oil: rich in unsaturated fatty acids and sterols, prevents skin aging.
- Peptide complex: acts specifically on eye bags
- Grape seed oil & avocado oils: nourishing properties
- Organic Aloe Vera: revitalises, soothes, protects and smoothes the skin

### Use :

Apply to the eye area and gently massage in.

For resale: apply morning and evening.

eyes

« Mixologie & Glow »

SKIN TYPE
All skin types
TEXTURE
White cream
FRAGRANCE
Neutral
QUANTITY PER TREATMENT
1ml
RESALE REFERENCE
KP20119-15ml
TREATMENT/RESALE REFERENCE
KP20119-15ml