

O·P·I

NEW

Repair &
Strengthen
Nails
Your dream
routine.*

REPAIR WITH REPAIR MODE™,
STRENGTHEN WITH NAIL ENVY®



Repair Mode™

PATENTED ULTI-PLEX TECHNOLOGY™

99% Nail Keratin Repair.* Repair Like Never Before.

Introducing Repair Mode™, a bond building nail serum with Patented Ulti-Plex Technology™. This fast acting formula provides 99% nail keratin repair*, 94% protection from damage*, and 4x stronger nails in 6 days.* Repair Mode™ repairs nail keratin by creating new bonds inside the natural nail via bio-mimicry of nail's natural amino acids*.



Apply 2 times a day on bare nails for 6 days for maximum efficacy.



GCP001
99399000067



Cap Made with PCR Materials
(Post Consumer Recycled)



Keratin structures in the nail are connected by hydrogen and disulfide bonds.

VEGAN FORMULA**

BEFORE



Damaged

Exposure to chemicals can damage the keratin and break the hydrogen and

AFTER 6 DAYS



99% Nail Keratin Repair*

New keratin bonds are created inside the natural nail via bio-mimicry of natural nail amino acids, leaving nails that are repaired by 99%.



4x Stronger Nails in 6 Days*



94% Protection of Keratin Protein from Damage*



Vegan**

O.P.I.

*When used as directed.**No animal-derived ingredients or by-products

Nail Envy®

VEGAN FORMULA**

95% Stronger Nails* More strength to envy.

NOW WITH TRI-FLEX TECHNOLOGY™,
A LIQUID SHIELD OF LAYER-BUILDING STRENGTH



BEFORE

AFTER 6 DAYS



Apply 2 coats on bare nails, then apply 1 coat daily for 6 days. On day 7, remove and start over with two fresh coats.



NTT80
99399000050

TRI-FLEX TECHNOLOGY™

Nail Envy® Strengthener with Tri-Flex Technology™ strengthens nails by 95%* and protects against chipping, peeling, and splitting, resulting in healthy, beautiful nails.



With Biotin, Calcium,
and Vitamins A, C, and E



94% of Consumers Said Nails
Looked Instantly Improved***



98% of Consumers Agreed Nails
Feel Nourished After 1 Week***

O.P.I.

*When used as directed. **No animal-derived ingredients or by-products
***Consumer testing on 108 consumers after using the product for 7 days

Nail Envy®

VEGAN FORMULA**

95% Stronger Nails* Strength + Color

NOW WITH TRI-FLEX TECHNOLOGY™,
A LIQUID SHIELD OF LAYER-BUILDING STRENGTH



Apply 2 coats, then apply 1 coat a day for 6 days. On day 7, remove and start over with two fresh coats.

PRO TIP

For extra protection, apply 1 coat of our Nail Envy® Strengthener formula before applying dark shades.



4 Iconic and 4 Exclusive Shades



NT223
99399000049
Pink to Envy



NT222
99399000048
Bubble Bath



NT224
99399000081
Alpine Snow



NT225
99399000056
Big Apple Red



NT226
99399000058
Tough Luv



NT227
99399000060
All Night Strong



NT228
99399000062
Double Nude-y



NT229
99399000064
Powerful Pink

O.P.I.

*When used as directed. **No animal-derived ingredients or by-products

Treatments



How do I prep my nails for a nail strengthener application?

It's always best to start with clean, bare nails before you apply any product. Check out our DIY tutorial: Power Pair Mani featuring Nail Envy® with Repair Mode™ and follow the steps to get the best results.

What is a prep booster?

A prep booster is a product or step added during the nail prep process that adds an additional benefit to the nail or the service process.

My nails are dry and/or prone to staining when I wear color. What can I do to protect them from staining?

Use 1 coat of Nail Envy® Strengthener as a base coat to create a barrier to staining that can occur with darker colors.

What does FSC certified on the package mean?

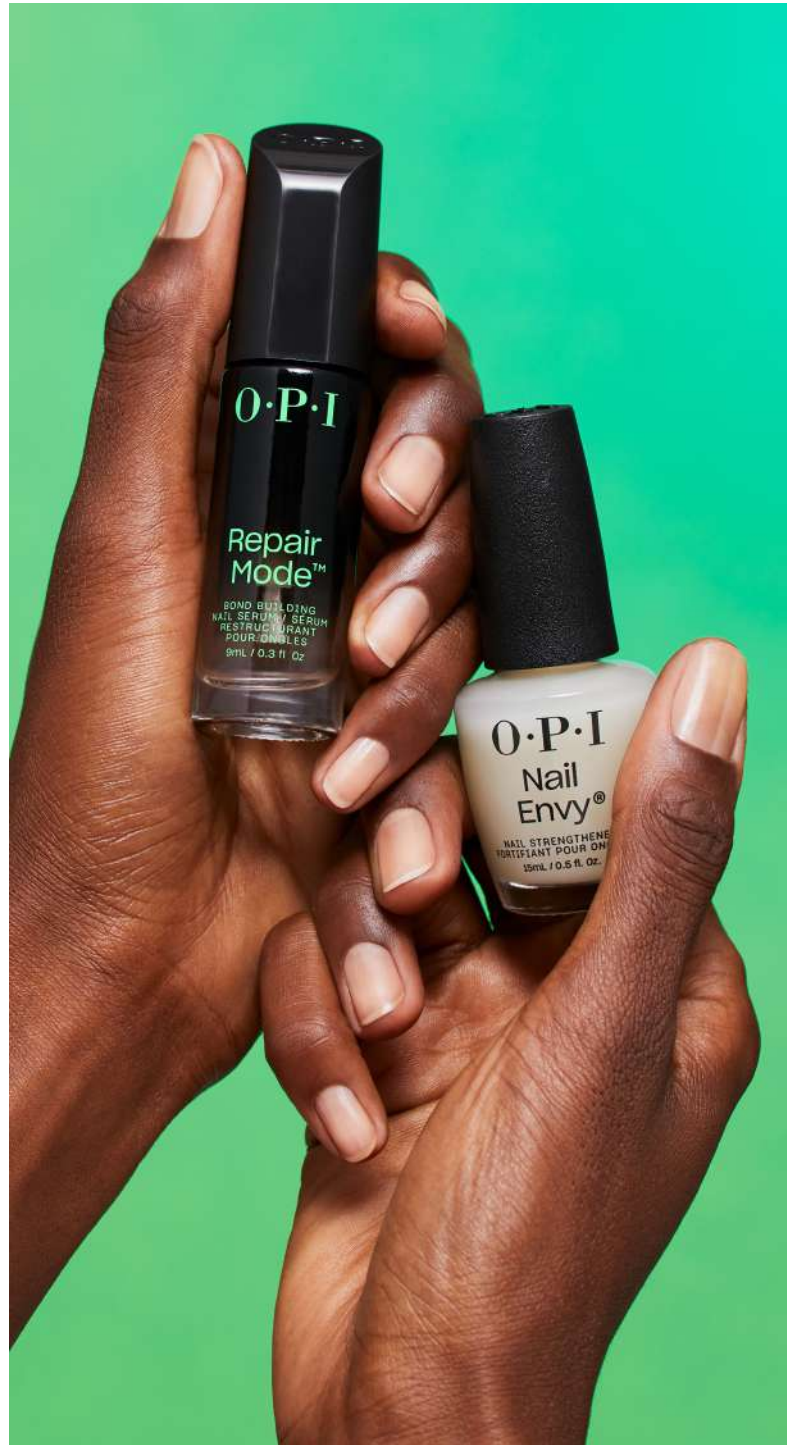
FSC stands for Forest Stewardship Council. OPI worked with the FSC to ensure our treatments packaging meets the FSC green guidelines.

Are OPI Treatments Vegan?

OPI Repair Mode™, Nail Envy® Strengthener, Nail Envy® Color, Start to Finish® and Natural Nail Strengthener are Vegan Formulas, i.e. they do not contain any animal-derived ingredients or by-products.

The label says the cap is made with PCR, what does that mean?

The cap on the Repair Mode™ bottle is made with PCR which stands for post-consumer recycled content. PCR packaging uses things



*When used as directed

Repair Mode™



What is Repair Mode™?

Repair Mode™ is the first bond building nail serum with Patented Ulti-Plex Technology™ that provides 99% nail keratin repair, 94% protection of keratin protein from damage, and 4x stronger nails when used as directed.

What is Ulti-Plex Technology™?

Ulti-Plex Technology™ is Patented, breakthrough technology that allows Repair Mode™ serum to penetrate the nails, interact with nail keratin, and create new bonds.

How do I use Repair Mode™?

Repair Mode™ is designed to be used on bare nails or to be applied as a prep booster prior to a nail service. For full benefits and bond restoration apply 2x a day for 6 days.

How does Repair Mode™ repair broken keratin bonds?

Repair Mode™ repairs from inside via biomimicry of nail's natural keratin. This serum contains Patented Ulti-Plex Technology™ that penetrates from within the nail recreating protein bonds in the nail.

How should I use Repair Mode™ to get the full benefits of the product?

To see the full benefits of Repair Mode™ 99% nail keratin repair, 94% protection of keratin protein from damage, and 4X stronger

nails you should apply 1 coat, 2x a day for 6 days.

Is Repair Mode™ designed for long-term use?

Yes, Repair Mode™ is designed for long term use to combat nail damage caused by daily activities. Apply it every day, 2x a day to repair and protect nail keratin.

If I stop using Repair Mode™ after the 6-day regimen what will happen to my nails?

Using Repair Mode™ actually penetrates and repairs your nails from within. Daily activities like washing your hands, etc, can cause damage, using Repair Mode™ as a daily treatment can protect your nails from everyday wear and tear.

Will my nails revert to their previous condition if I stop using Repair Mode™?

Using Repair Mode™ actually penetrates and repairs your nails from within. Daily activities like washing your hands, etc, can cause damage, using Repair Mode™ as a daily treatment can protect your nails from everyday wear and tear.

The benefits provided by Repair Mode™ include 99% nail keratin repair*, 94% protection of keratin protein from damage*, and 4X stronger nails*. Is this VS my own nail condition or competitive products?

Repair Mode™ is breakthrough technology that has been tested to show repair, protection, and strength vs. a natural/untreated nail.

use Repair Mode™ under my OPI Lacquer shades or treatments?

Yes, you can use Repair Mode™ as a Prep Booster with your OPI Lacquer shades or Nail Envy®. Apply 2 coats of Repair Mode™ to clean, bare nails, and prep those nails prior to lacquer application. For step-by-step instructions, visit opi.com and follow the prep steps in our DIY tutorial: Power Pair Mani featuring Nail Envy® with Repair Mode® for best results when using Repair Mode® with any lacquer system.

I like to go to the salon and have my nails done, can my nail pro use Repair Mode™ under my OPI salon services?

Yes, your nail pro can use Repair Mode™ as a Prep Booster under your OPI salon services.

I'm a nail pro. Can I use Repair Mode™ under my OPI salon services?

You can absolutely use Repair Mode™ under all of your salon services! In fact, OPI experts strongly advise it. For step-by-step instructions, visit opi.com and check out video tutorials for Repair Mode™ as a prep booster to any service.

What OPI pro products are compatible with Repair Mode™?

You can use Repair Mode™ as a prep booster under all OPI products: lacquers, treatments, GelColor, Powder Perfection, Hard Gel, and Acrylic systems.



I do my nails at home and like to keep my nails coated. Can I

Nail Envy® FAQs



What is different about Nail Envy® Strengthener in comparison to Original Nail Envy®?

The Nail Envy® formula has been updated with new Tri-Flex Technology™, which consists of 3 resins that form a supportive layer onto the surface of the nail, adding strength.

Nail Envy® Strengthener and Nail Envy® Color utilize Tri-Flex Technology™. What is Tri-Flex Technology™?

Tri-Flex Technology™ is the combination of 3 resins: nitrocellulose, epoxy resin, and acrylate resin. These create a liquid shield when applied and reinforce the nails with layer-building strength.

How do I use Nail Envy® Strengthener?

Nail Envy® Strengthener is designed to be used as a 1-week regimen: apply 2 coats of Nail Envy® Strengthener, then apply 1 coat a day for 6 days. On day 7, remove and reapply a new coating as desired.

What will Nail Envy® Strengthener do for my nails?

Nail Envy® Strengthener forms a liquid shield of layer building strength that delivers:

- 95% stronger nails in 1 week*
- 98% of consumers agreed nails feel nourished after**
- 94% of consumers said nails look instantly improved**

Protects nails against splitting, chipping, and peeling

How do I know if Nail Envy® is right for my nails?

Nail Envy® Strengthener forms a liquid shield of layer building strength that works on all nail types, but is ideal for weak, soft or thin nails.

Can I use Nail Envy® Strengthener under Nail



Envy® Color or other OPI lacquers?

Yes, Nail Envy® Strengthener makes a great strengthening base coat under Nail Envy® Color or OPI lacquer shades. It not only provides strength, it also provides a barrier to protect nails from any discoloration.

Can I use Nail Envy® Strengthener with Repair Mode™?

Nail Envy® can absolutely be used over Repair Mode™, but make sure you wait 10 minutes between each application! For best results apply 2 coats of Repair Mode™ before prepping nails, then clean nails and apply your favorite Nail Envy®

Strengthener.

If I'm wearing Nail Envy® Strengthener, can I use Repair Mode™ on new nail growth?

After opening your bottle of Repair Mode™, drain excess serum from the brush and then apply to visible new nail growth near the cuticles.

PRO Tip - if nails look dull after Repair Mode™ application use a dry nail wipe to buff away any residue.

Do I need to use a top coat with Nail Envy® Strengthener?

Nail Envy® has built in shine and protection, so there is no need for a separate top coat.

How do I remove Nail Envy® Strengthener?

Saturate a nail wipe with Expert Touch Lacquer Remover and place the wipe on the nail, allowing the remover to penetrate for 3-5 seconds. Press and swipe away from the cuticle changing the wipe every 2-3 nails as needed.

Nail Envy® Strength +



Can I use Nail Envy® Strengtheners under Nail Envy® Color or other OPI lacquers?

Yes, Nail Envy® Strengtheners makes a great strengthening base coat under Nail Envy® Color or OPI lacquer shades. It not only provides strength, it also provides a barrier to protect nails from any discoloration.

Can I use Nail Envy® Color with Repair Mode™?

Yes, Nail Envy® can absolutely be used over Repair Mode™, but make sure you wait 10 minutes between each application! For best results apply 2 coats of Repair Mode™ before prepping nails, then clean nails and apply your favorite Nail Envy® Strengtheners.

If I'm wearing Nail Envy® Color, can I use Repair Mode™ on new nail growth?

Yes, you can use Repair Mode™ on new nail growth while wearing other OPI services. After opening your bottle of Repair Mode™, drain excess serum from the brush and then apply to visible new nail growth near the cuticles. PRO Tip – if nails look dull after Repair Mode™ application use a dry nail wipe to buff away any residue.

Do I need to use a top coat with Nail Envy®?

Nail Envy® has built in shine and protection, so there is no need for a separate top coat.

How do I remove Nail Envy® Color?

Saturate a nail wipe with Expert Touch Lacquer Remover and place the wipe on the nail, allowing the remover to penetrate for 3-5 seconds. Press and swipe away from the cuticle,

changing the wipe every 2-3 nails as needed.

What is the difference between Nail Envy® Strengtheners and Nail Envy® Color?

The Tri-Flex Technology™ found in Nail Envy® Strengtheners and Nail Envy® Color creates a liquid shield that reinforces the nail with layer-building strength.

benefits follow the Nail Envy® Color usage instructions.

How do I use Nail Envy® Color?

Nail Envy® color is designed to be used as a 1-week regimen: apply 2 coats of Nail Envy®, then apply 1 coat a day for 6 days. On day 7, remove and reapply a new coating as desired.

Do I need to use a base coat with Nail Envy® Color?



94% of users felt Nail Envy® Strengtheners with biotin, calcium and vitamins instantly improved the look of their nails*, while Nail Envy® Color combines strengthening with your favorite OPI shades.

Why should I pick Nail Envy® Color over Nail Envy® Strengtheners?

Choose Nail Envy® Color when you want an all-in-one solution for color with the strengthening benefits of Nail Envy® Strengtheners.

Do Nail Envy® Color shades provide one coat color coverage?

All Nail Envy® Colors provide first coat color coverage, except Pink to Envy which is a tinted gloss designed to brighten the nail. For full

Nail Envy® Color can be used alone, if your nails are dry and/or prone to staining apply a coat of Nail Envy® Strengtheners as a base coat.

My Nail Envy® color has grown out, how do I keep it from chipping and showing signs of wear?

Apply 1 coat of Nail Envy® color every day for 6 days to strengthen nails and prevent visible signs of growth and wear.

Can I use Nail Envy® Strengtheners over Nail Envy® Color?

Nail Envy® Strengtheners can be used daily as an alternative to Nail Envy® color.