

L'omé  
Paris

A red heart graphic with a distressed, ink-like texture, positioned to the left of the word 'Paris' in the logo.

Colour Manual

# Brand Story



Lôme Paris® is a unique hair colour range. Its wide range of shades and products answers all colour wishes and offers 100% grey coverage and long-lasting colour results at optimal hair condition.

The special formulations of Lôme Paris® give the hair a unique bright and intense colour, in fact a natural-looking colour result with intense shine.

**ULTIMATE COLOUR. NATURAL TOUCH.**



L'omé  
Paris

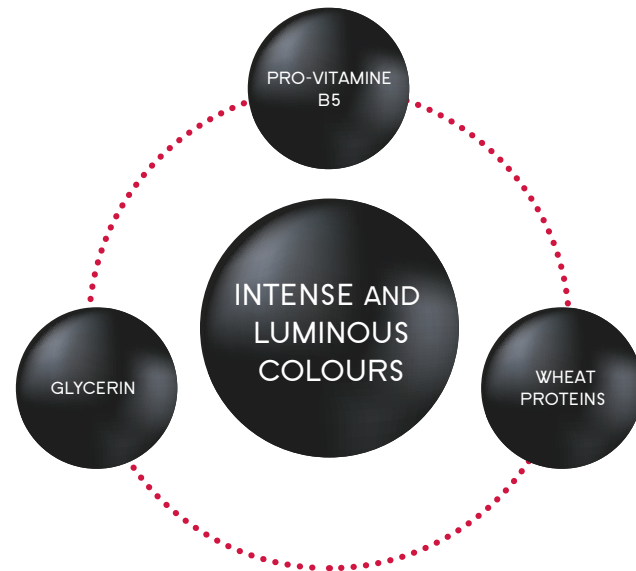
# Contents

5	Permanent Colour	15	Post-Color Shampoo
6	Colour System	17	Highlift Shades
7	Permanent Colour - Shade Chart	18	Bleach
12	Choice of Shade	19	Mix Shades
12	Grey Coverage	20	Contrast Shades
13	Crème Developers	22	Pastel Toners
14	Natural & Reflex Shades	23	Quick Reference Guide

# Permanent Colour



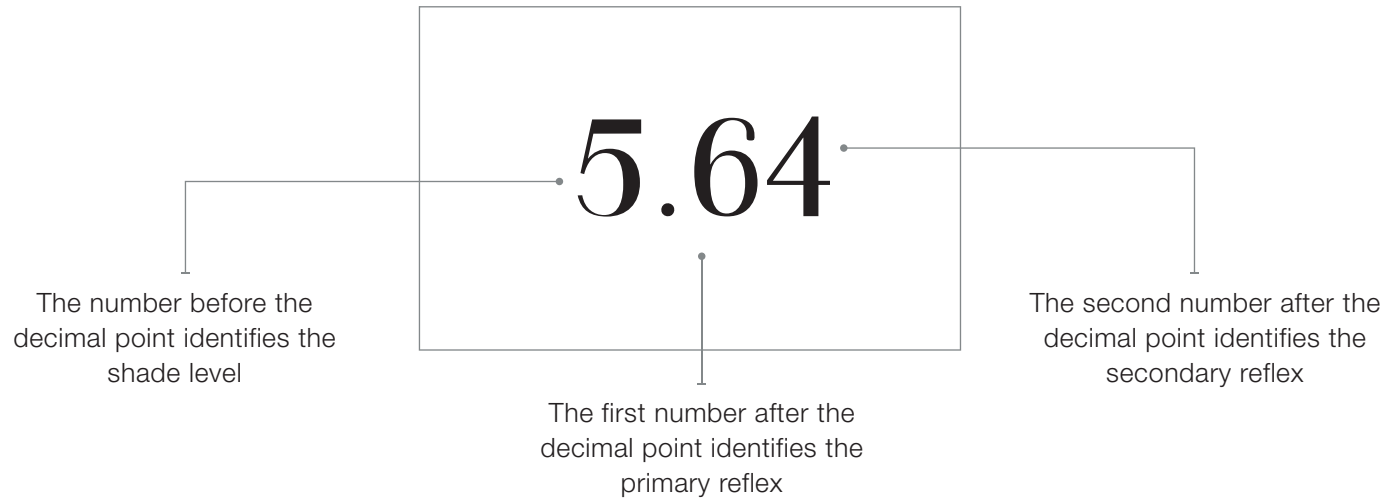
Our latest generation of permanent hair colours is enriched with three protective & conditioning ingredients:



- **Glycerin** - for moisture & elasticity
- **Pro-Vitamine B5** - for nourishment and protection of the hair structure
- **Wheat Proteins** - for repair and shine

ULTIMATE COLOUR. NATURAL TOUCH.

# Colour System



## Shade level

Number	Shade
1	Black
3	Dark Brown
4	Brown
5	Light Brown
6	Dark Blonde
7	Blonde
8	Light Blonde
9	Very Light Blonde
10	Extra Light Blonde

## Tone level

Number	Tone
1	Ash
2	Violet/Pearl
3	Gold
4	Copper
5	Mahogany
6	Red
8	Mocca/Brown

# Lomé Paris Colour Chart



# Permanent Colour - Shade Chart

Natural

10.0



Extra Light Blonde

9.0



Very Light Blonde

8.0



Light Blonde

7.0



Blonde

6.0



Dark Blonde

5.0



Light Brown

4.0



Brown

3.0



Dark Brown

1.0



Black

High Cover

9.HC



Very Light Blonde H.C.

8.HC



Light Blonde H.C.

7.HC



Blonde H.C.

6.HC



Dark Blonde H.C.

5.HC



Light Brown H.C.

4.HC



Brown H.C.

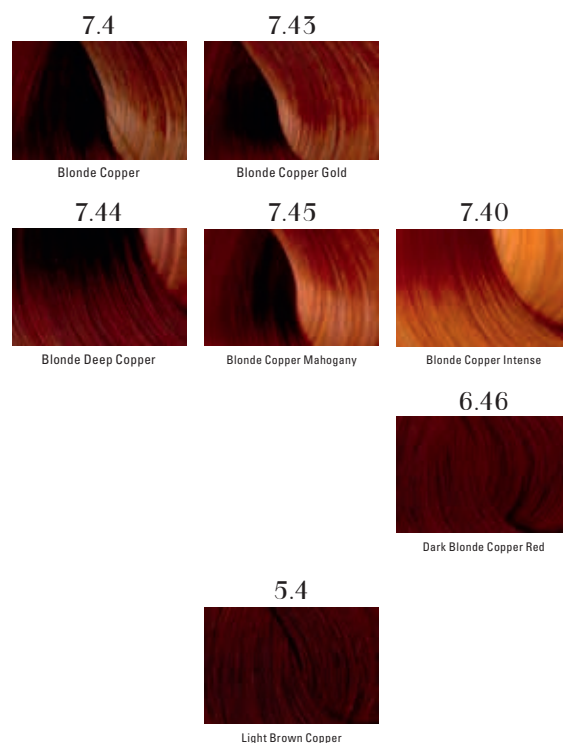
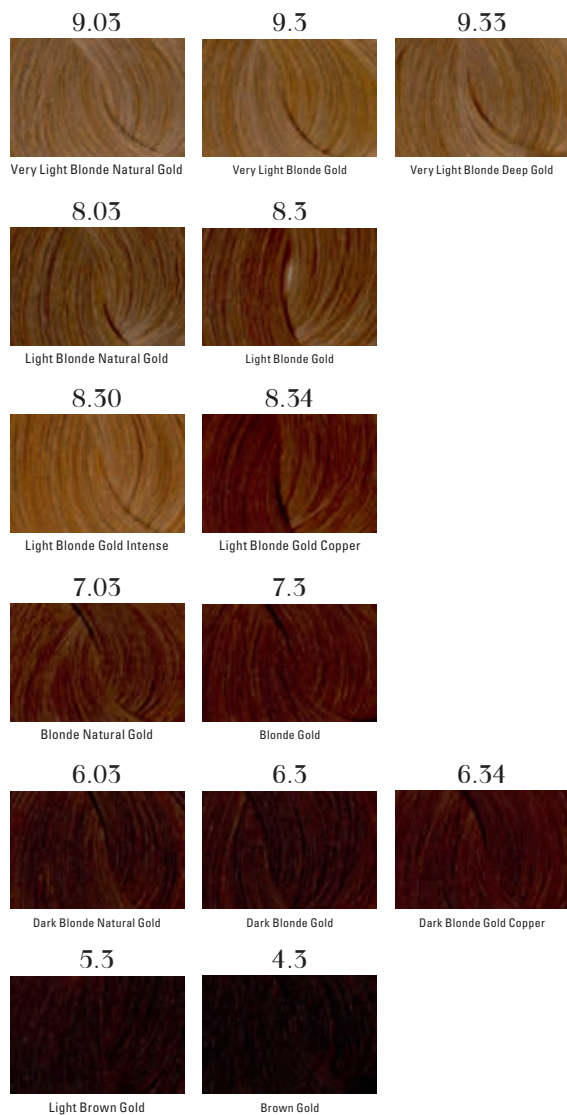
X.0 & X.HC = 100% coverage | X.HC = high cover shades, approx. 1/2 level darker than X.0 shades



# Permanent Colour - Shade Chart

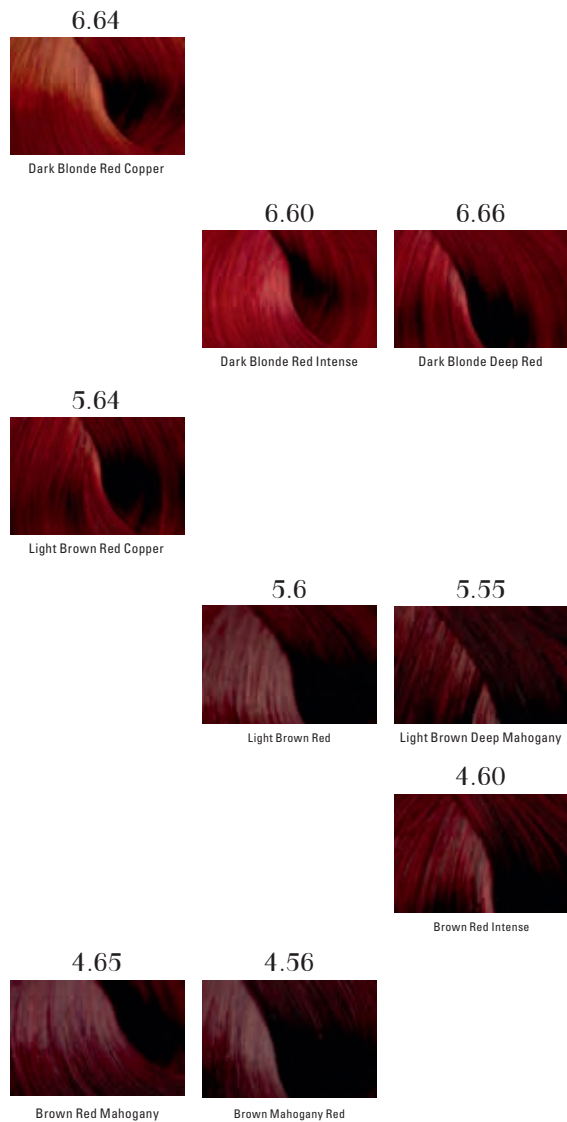
Gold

Copper

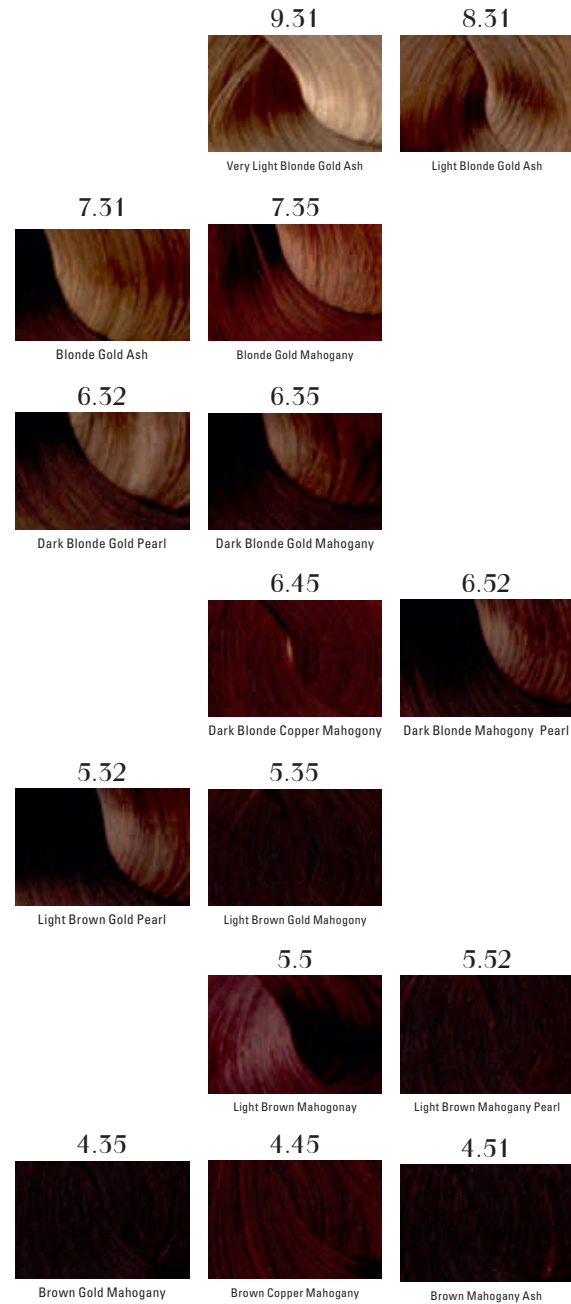


# Permanent Colour - Shade Chart




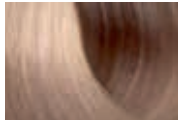

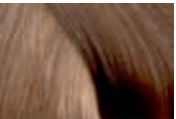


















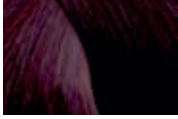

## Red & Mahogany



## Warm Brown / Beige



# Permanent Colour - Shade Chart

Cool Brown / Beige			Pearl	Ash	Mocha
9.12  Very Light Blonde Ash Pearl	9.13  Very Light Blonde Ash Gold	9.23  Very Light Blonde Pearl Gold	10.21  Extra Light Blonde Pearl Ash	10.1  Extra Light Blonde Ash	
	8.13  Light Blonde Ash Gold		9.22  Very Light Blonde Deep Pearl	9.1  Very Light Blonde Ash	
7.12  Blonde Ash Pearl	7.13  Blonde Ash Gold	7.23  Blonde Pearl Gold		8.1  Light Blonde Ash	8.8  Light Blonde Mocha
	6.13  Dark Blonde Ash Gold	6.23  Dark Blonde Pearl Gold		7.1  Blonde Ash	6.8  Dark Blonde Mocha
5.12  Light Brown Ash Pearl	5.15  Light Brown Ash Mahogany	5.25  Light Brown Pearl Mahogany		6.1  Dark Blond Ash	4.8  Brown Mocha
	4.15  Brown Ash Mahogany		<b>Violet</b>		
			4.26  Brown Violet Red		
			4.20  Brown Violet Intense	2.10  Black Ash Intense	

# Choice of Shade

The result depends on the precision of the diagnosis according to:

- The natural hair color
- The percentage of grey/white hair
- The final color result desired

## Grey Coverage



The natural & reflex shades lighten up to 4 levels. The shades of the natural series provide 100% grey hair coverage. To achieve such a result also with the reflex shades, these need to be mixed with the shades from the natural series:

**0-50% of grey:**

no adding of natural shade necessary

**50-100% of grey:**

add 1/3 of natural shade

Mix with oxidizer 20 Vol./6% for a perfect coverage.

# Crème Developers

Lômé Paris Crème Developers are specially formulated to guarantee optimal results of the Lômé Paris colour products. They help to retain moisture and prevent dehydration

throughout the colouring process. Leaving hair feeling beautifully soft and manageable with healthy body and glossy shine.



## choice of oxidizer

	OXIDIZER	USE	TIMING (without heat)
1:1	5 Vol. (1.5%)	- To pastelize or mattify bleached hair	5-10 min. depending on the desired result; to monitor
	10 Vol. (3%)	- To darken or to recolor sensitive hair - After bleaching - For coloring sensitive hair from root to end	30 min. for regular application
	20 Vol. (6%)	- Lifts 1 to 2 levels - For general use (to keep the same level) - To cover gray hair	30 min. for regular application 35 min. for resistant gray hair
	30 Vol. (9%)	- Lifts 2 to 3 levels	30 min. for regular application
1:2	30 Vol. (9%)	- For general use with super lightening	50 min.
	40 Vol. (12%)	- Lifts up to 4½ levels	50 min.

# Natural & Reflex Shades

## MIXING 1:1

Pour 60ml of Crème Developer and 60ml of Colour Crème in a non-metallic bowl or shaker. Mix well until the mixture forms a homogeneous and smooth paste.

**Note:** the color of the mixture does not represent the final color. Some shades may give the hair a dark appearance during the processing time which will be removed upon rinsing.



1 part  
developer

+

1 part  
colour crème

## application and processing time

### STEP 1:

#### Apply color

Apply with a brush to dry unwashed or slightly damp hair.



### STEP 2:

#### Processing time

The average processing time is 30 minutes and may vary according to the initial shade. With resistant hair types, you may wish to extend the processing time to 45 minutes.



### STEP 3:

#### Emulsify & Rinse

Emulsify hair color with water. Rinse abundantly until the water runs clear and then wash hair with a post-coloring shampoo.



<b>Unfaded shades</b>	regrowth lengths	20 to 25 min. 10 to 5 min.	<b>NEVER EXCEED A TOTAL PROCESSING TIME OF 45 MINUTES.</b> The processing time can be reduced by half under heat activation.
<b>Slightly faded shades</b>	regrowth lengths	15 to 20 min. 15 to 10 min.	
<b>Completely faded shades</b>	regrowth lengths	5 to 10 min. 25 to 20 min.	

# Post-Color Shampoo



## The special Lômé Paris Post-Color Shampoo

- stops the oxidative process
- eliminates ammonia residues
- closes the cuticle and seals the pigments within the hair structure
- helps to preserve the hair colour and improves colour durability
- adds glossy shine





# Highlift Shades



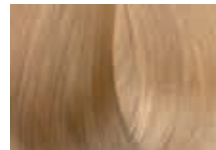
The HIGHLIFT range provides up to 4,5 levels of lift for extra light blonde shades in a single process of lifting and toning.

## MIXING 1:2

Pour 80ml of Crème Developer and 40ml of Colour Crème in a non-metallic bowl or shaker. Mix well until the mixture forms a homogeneous and smooth paste.

**Note:** We recommend, to apply pastel coloration, or regular color of a level 9 or 10 to the length and ends for color balancing.

12.0



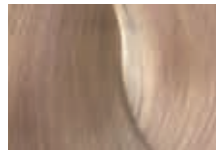
Ultra Blonde

12.1



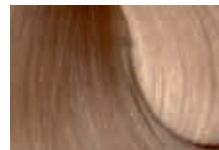
Ultra Blonde Ash

12.2



Ultra Blonde Pearl

12.21



Ultra Blonde Pearl Ash

## application and processing time

### STEP 1:

#### Apply color

Apply with a brush to dry unwashed or slightly damp hair.

### STEP 2:

#### Processing time

The average processing time is 50 minutes on regrowth. Then apply an emulsion to the ends for 5 minutes.

### STEP 3:

#### Emulsify & Rinse

Emulsify hair color with water. Rinse abundantly until the water runs clear and then wash hair with a post-coloring shampoo.

We recommend, to apply pastel coloration, or regular color of a level 9 or 10 to the length and ends for color balancing.



**NEVER EXCEED A TOTAL PROCESSING TIME OF 50 MINUTES.** The processing time can be reduced by half under heat activation.



# Bleach



## MIXING:

full head & foil highlights 1 : 1,5

ombré & balayage 1 : 1

Mix in a non-metallic bowl with oxycream (10V/3%, 20V/6%, 30V/9% or 40V/12%), depending on the technique and the desired lightening degree.

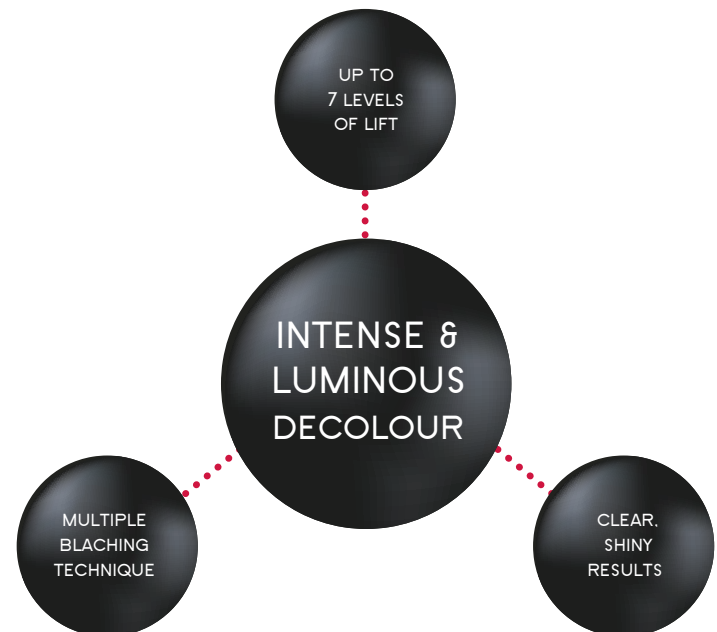
## PROCESSING TIME:

varies from 10 to 50 min. and has to be controlled according to the desired result.

**Note:** Apply mixture to dry hair.

The Lôme Paris bleach powder lightens **up to 7 levels** for **reliably clear, cool results**.

It leaves the hair look luminous with shine. Thanks to its **compact, dust-free powder** consistency with light blue pigment, it is **suitable for multiple bleaching techniques**, from full head bleaching to highlights and ombré / balayage.



# Mix Shades



Violet



Copper



Red

The Lôme Paris MIX shades have been specifically formulated to boost the intensity of any shade and can be used as correctors to counteract any unwanted shades.

Mix Shade	Effect
Violet	Violet reflection to level 6 and above
Copper	Added copper reflection to any shade
Red	Enhanced red reflection to levels 7 and below

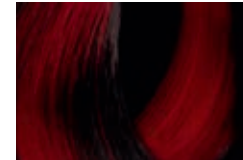
Booster use	Mixing ratio 1 : 1 : 1/4
For increased vibrancy	40mls colour 40mls developer 10mls mix tone



# Contrast Shades



Magenta Red



Red



Copper

The CONTRAST shades provide ultra-radiant highlights in a single process of lifting and colouring - without prior bleaching! Even on a dark(er) base!

The CONTRAST shades lift up to 4.5 levels, and are mixed 1:1 with crème developer 30 Vol. (9%) or 40 Vol. (12%) - depending on the desired intensity and level of lift.

Service	Developer	Mixing	Processing	Application
Highlights	30Vol. (9%) or 40Vol. (12%)	1 : 1	5-15 mins	on dry, clean hair

# Pastel Toners

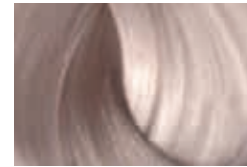


P.01



Pastel Ash

P.02



Pastel Pearl

P.021



Pastel pearl Ash

The PASTEL toners are ideal to pastelize or mattify bleached hair, and add tonality. They give no lifting or grey coverage!

The PASTEL toners and are mixed 1:1 with crème developer 5 Vol. (1.5%) or 10 Vol. (3%) - depending on the desired intensity/result.

Service	Developer	Mixing	Processing	Application
Pastel Toning	5Vol. (1.5%) or 10Vol. (3%)	1 : 1	5-15 mins	on dry, clean hair

# Quick Reference

## Hair Colouring Precautions

- Administer a patch test 48 hours prior to any colour service
  - Do not colour hair if the scalp has any abrasions present
  - Perform a strand test to preview colour results
  - Always wear gloves
  - Do not allow the colour to come into contact with the eyes
  - Do not overlap the hair colour
  - Do not use very hot water
- 

## Patch / Allergy Test

- Cleanse the area behind the ear
- Prepare colour – using the same mixing ratio as for the strand test
- Apply colour to the back of the clients ear lobe with a cotton bud
- Leave for 48 hours
- If no reaction has occurred proceed with colour service  
/ If there is any reaction, redness or itchiness rinse immediately and do not proceed with colour service

## Strand Test

This will determine your end colour result and could save time

- Mix 10ml colour + 10ml of desired developer
- Apply to a small section of the hair using foil to isolate the strand
- Process for the full time – Rinse and shampoo
- The result will determine if adjustments to the formulation are necessary

