

wunderbar
create wonderful hair





wunderbar
create wonderful hair

Wunderbar supports your passion for your craft by providing you with cutting-edge professional hair products.

We help you to express your creative spirit and create unique looks with strong, healthy and vibrant hair.

The Wunderbar range includes expert colour products based on the unique Triple Color Technology TM, which improves the hair condition and vibrancy with unlimited colour mixing possibilities.

wunderbar
create wonderful hair



Wunderbar is **GERMAN**

Offering Solid – Bold – Intense Colouring
with even coverage results

wunderbar
create wonderful hair

Wunderbar
PERMANENT COLOURING



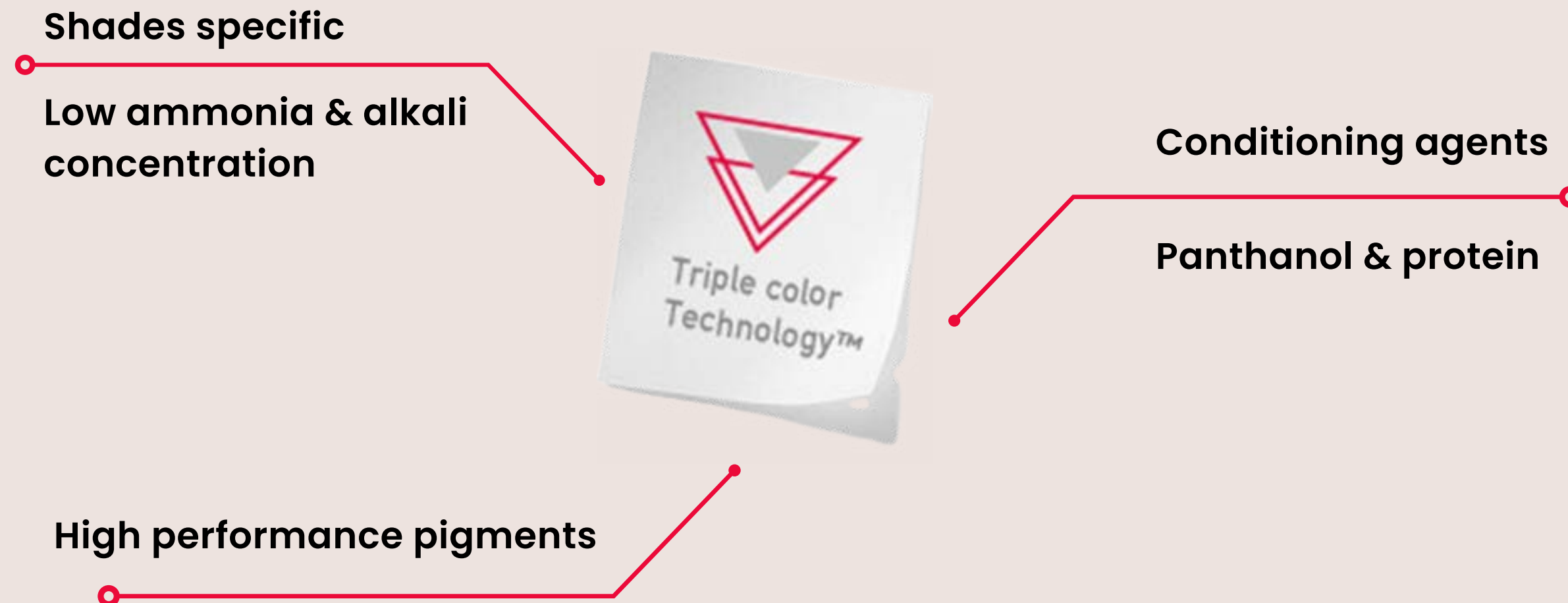
wunderbar
create wonderful hair

- Permanent Colour
- Demi-permanent Colour
- Freestyle Semi-permanent Colour
- Gloss 'n Tone Demi-liquid Colour
- Blond de-light Bleaches
- Perm
- Color Refresh Temporary Colours
- Care & Style



Features & benefits

TRIPLE COLOUR TECHNOLOGY™





Permanent **HAIR** **COLOURING**

- 125 Shades
- 8 Mix Tones + Clear
- Permanent & Demi-permanent
- 100% Grey coverage
- Less irritation for sensitive scalps
- Thick consistency, no dripping during application
- Optimal durability & long lasting results
- 60ml Tube
- Does not contain PPD
- Vegan formula



Wunderbar **NUMBER SYSTEM**

2	Black
3	Dark Brown
4	Medium Brown
5	Light Brown
6	Dark Blonde
7	Medium Blonde
8	Light Blonde
9	Very light Blonde
10	Extra Light Blonde





Wunderbar **TONES**

1	Ash (Grey)
2	Matt (Green)
3	Gold (Yellow)
34	Gold/Red (Copper look)
4	Red
5	Mahogany
6	Violet
7	Brown
8	Pearl (Blue)
9	Soft Violet(Cendré (iridescent))

Wunderbar

LEVEL . TONES

6/34

Dark Blonde

The number before the decimal defines the shade level required

Gold

The first number after the decimal defines the primary tone required

Red

The second number after the decimal defines the secondary tone required



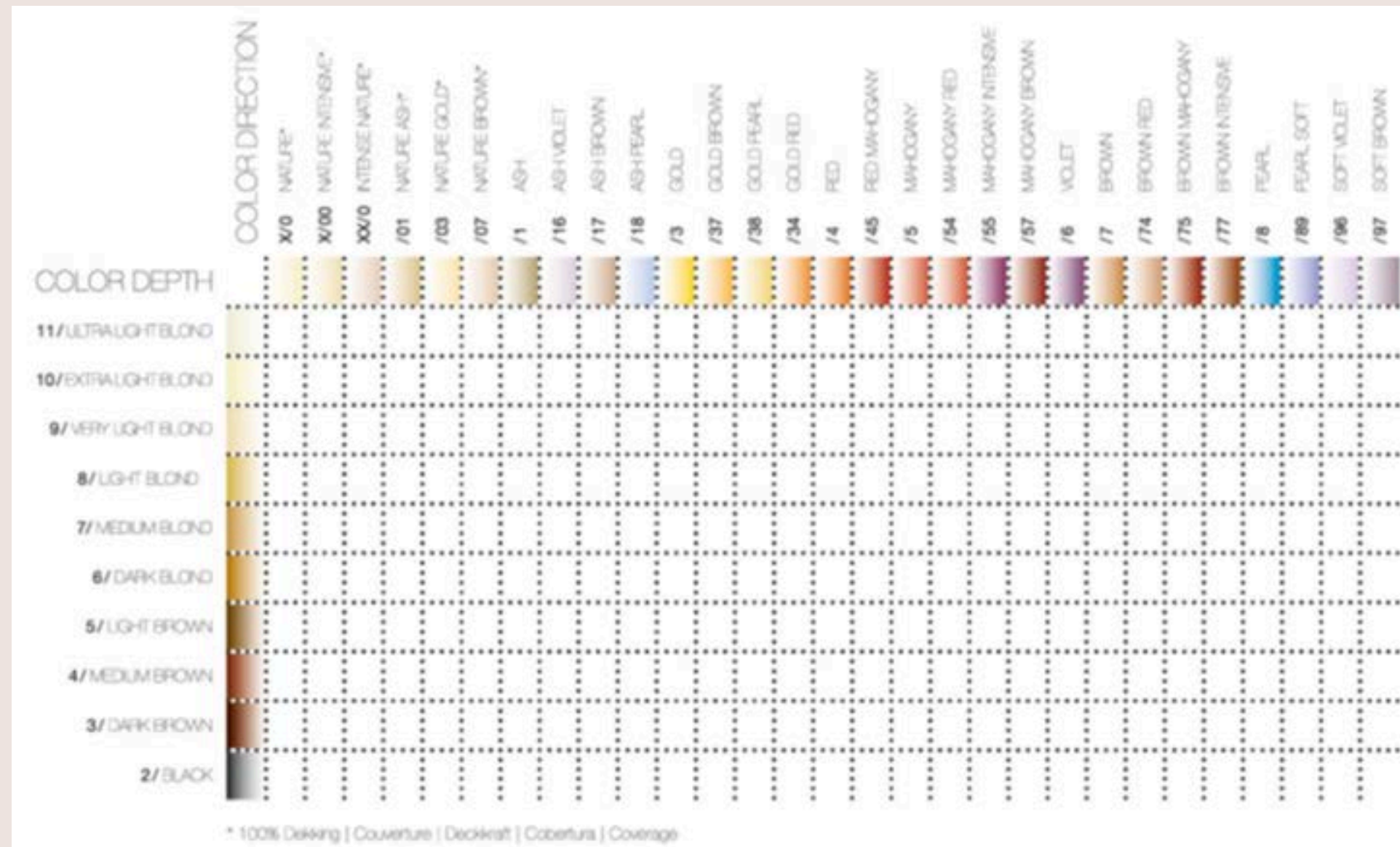
Wunderbar NATURALS

Natural shade	/0	/00	xx/0
Pigment density	Normal	Intense	Intense
Pigment Indentity	Cool beige	Cool beige	Cool beige
Coverage	Natural, modern 100%	Intense / rich 100%	Intense / depth 100%
Grey coverage	8/0 Light blonde	9/00 Light Intense	99/0 Light Intense
Hair Type	Normal	Normal to Coarse	Coarse
Colour level		1/2 shade darker	1 shade darker



The Wunderbar

COLOR RANGE & COORDINATES



The Color chart Range & coordinates chart which shows vertically level by level, and horizontally all tonal directions – making it Easy to use & helps the hairdresser determine which colour to select.



Wunderbar

PIGMENT IDENTITY

- **Natural, cool- beige identity**

- Slight dominance of blue pigment
- Combined with warm pigments it gives a result of a clear beige color shade.

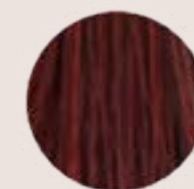
- **Advantage:** The hair color can not turn green.

- **The colour** always looks natural.

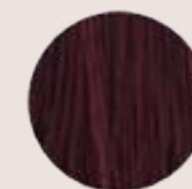
- **Brighter** fashion shade appearance



10-95



55-46



55-65



66-46

Wunderbar
REDS

MIX 0/65



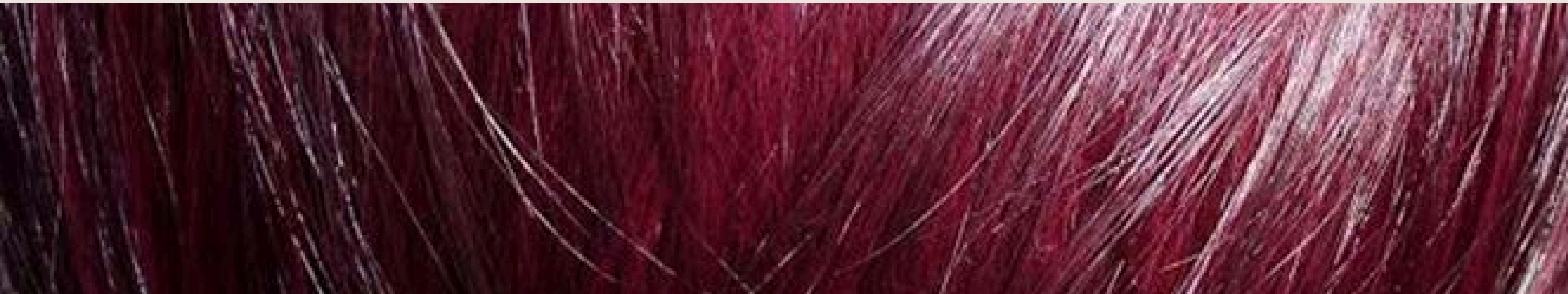
66/46



55/65

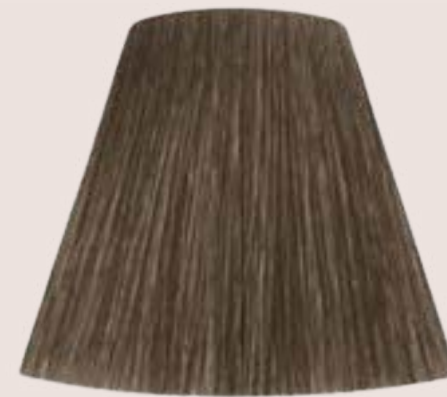


55/46



Wunderbar
BROWNS

8/18



9/16



7/17



Wunderbar
BLONDES

11/89



11/96



10/95



10/96

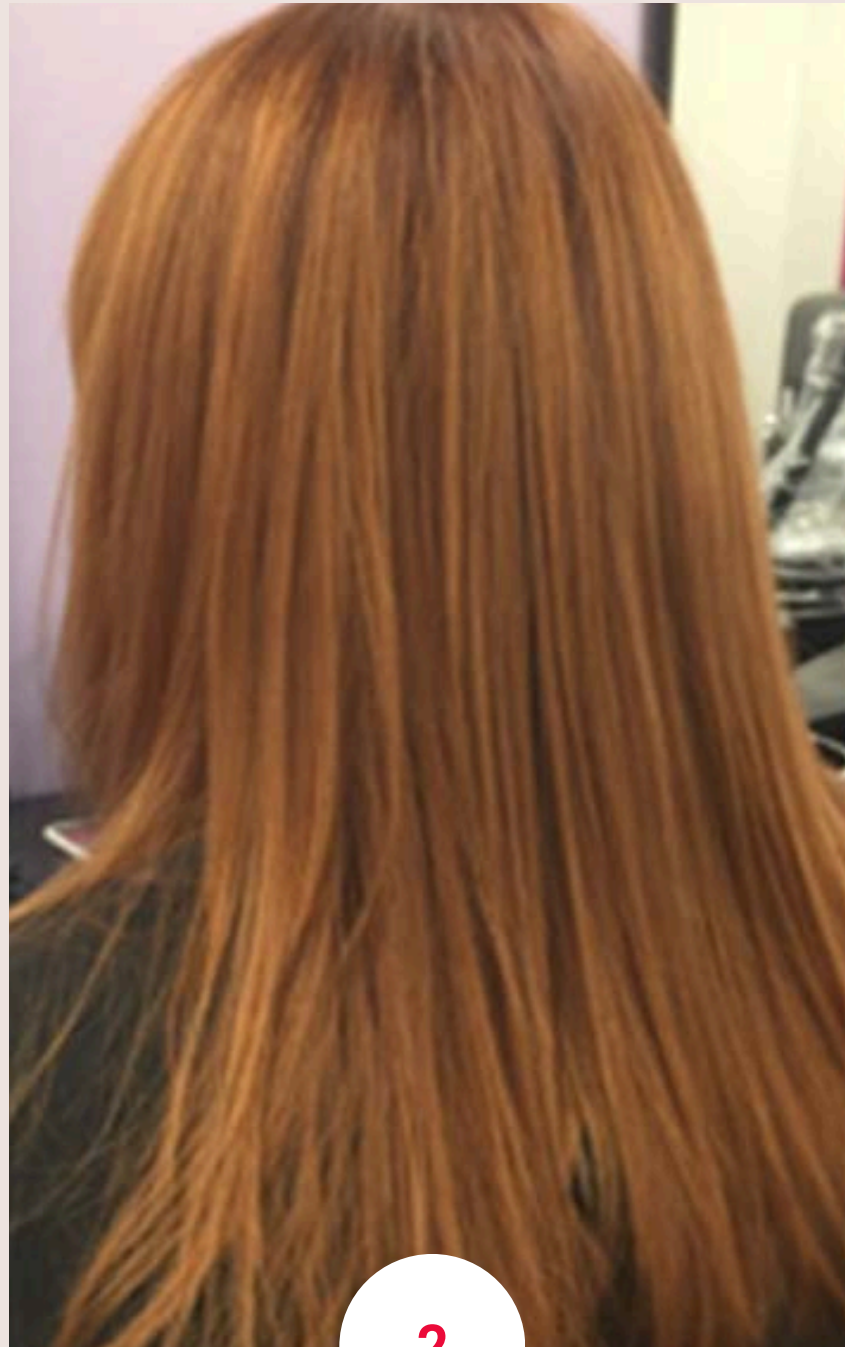


10/97





1



2

Wunderbar

EXAMPLES

1

Blonde

Full head foils

Bleach + 9%

Toner 10/18 + 1.9%

2

Copper

Roots: 6/34 + 6%

Mid-lengths & ends:

8/34 + 0/34 mix + 1.9%

Timing & Mixing ratios

FOR PERMANENT COLOUR

Levels 2 - 10

3%/10vol – Tone on Tone or to Deposit

6%/20vol – 1 Levels lift – Grey coverage

9%/30vol – 2 Levels Lift

12%/40vol – 3 Levels Lift

Blond Selection 11's

9%/30vol – Blond Selection 3-4 Levels Lift
(on natural hair)

12%/40vol – Blond Selection 4-5 Levels Lift
(on natural hair)

MIXING RATIO **1**



Timing 30-35 mins



TO

1



MIXING RATIO **1**



Timing 45 mins



TO

2



Natural Shades

HAVE A COOL BEIGE IDENTITY

**Natural Normal
Hair type**



X/o

8/0 light blond

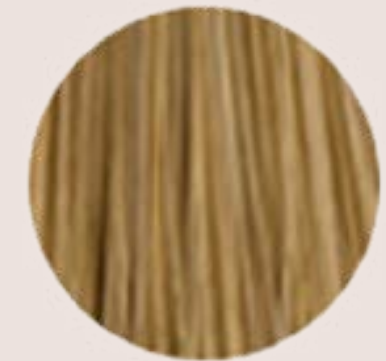
**Intense Natural
Normal to Coarse
Hair type**



X/00

9/00 light blond intensive

**Intense Natural
Very Coarse /
Resistant Hair type**



XX/o

99/0 light blond intensive

**100% Coverage
up to level**

Depth to Normal

½ Shade darker

1 Level darker



Hints & Tips

PERMANENT COLOURING

x/0X Part of the Naturals cover 100%

Example:



6/01



7/03



8/07

These can be used with fashion shades for coverage-

Help elimiate or add extra tone where needed



/01

Nature Ash



/03

Nature Gold



/07

Nature Brown

Grey/white coverage

SHADE LEVELS 2 – 10



Natural Tone



Fashion Tone



0-30%



3/3 60g



60g



30-50%



1/3 (20g)

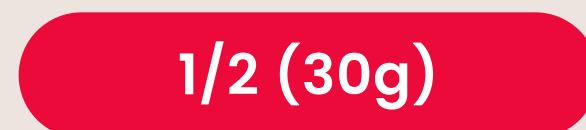


2/3 (40g)

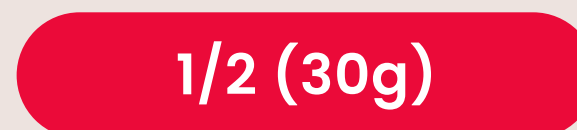


60g

50-70%



1/2 (30g)



1/2 (30g)



60g

70-100%



2/3 (40g)



1/3 (20g)



60g

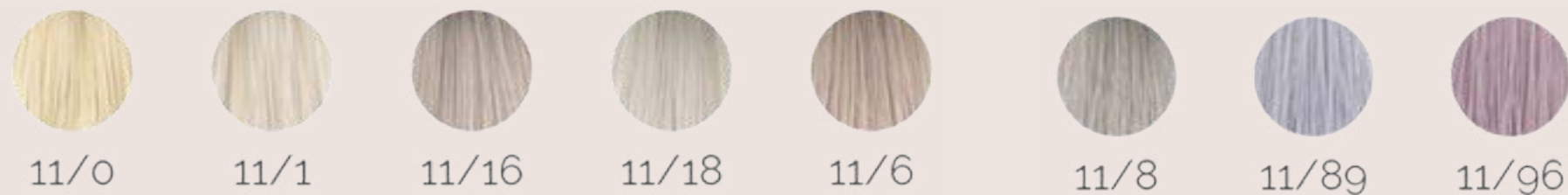
*Use 6% (20vol) for optimal results

Blond Selection

11 SERIES

- 8 High- lift shades
- Ideal from shade level 6/0 & lighter
- Best results on natural hair

Contains a high density of cool pigment (ash and violet) = clear blond results



Tip: These are not designed to use as toners or Demi-permanent colours!



Grey/white coverage

BLOND SELECTION 11'S

- Adding 9/0 - 9/00 - 99/0 gives 4 levels lift
- Mixing ratio & choice of developer remain the same as regular mixing
- 9%(30vol) or 12% (40vol) for optimal results



Natural Tone



Blond Selection



9%(30vol) or 12% (40vol)

0-30%

3/3 60g

60g

30-50%

1/3 (10g)

2/3 (20g)

60g

50-70%

1/2 (15g)

1/2 (15g)

60g

70-100%

2/3 (20g)

1/3 (10g)

60g


Peroxides with **PASTEL COLOURING**

Levels 2 – 10

1.9%/6vol – Gentle Toning – Best for foils

3%/10vol – Intense Toning – Best for full head

MIXING RATIO 1

 Timing 3-15 mins

TO 2



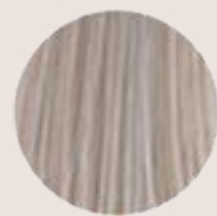
/1



/16



/17



/18



/6



/7



/8



/96



/97

Hints & Tips

PASTEL TONING

What will cause the unbleached hair to change tone?

- Blond Selection 11's – 2.2% ammonia not designed as toners
- 3%/10vol Peroxide – No lift but there will be tonal change to the natural hair

Can you tone lower levels?

- Levels 2-10 Used to tone with 1.9%/6vol peroxide

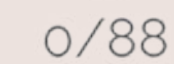
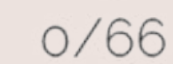
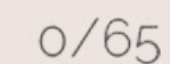
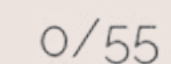
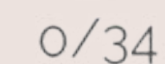
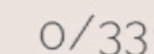
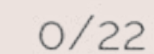
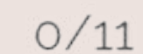
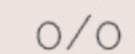
How to neutralise strong orange tones?

- Foils – Use 10/18 + 10/8 with 1.9%/6vol peroxide
- Full head – 10/18 + 10/8 with 3%/10vol peroxide





Clear Tone – Dilute pastels tones



When adding Mix tones you need the same amount of peroxide to colour.

Wunderbar

MIX TONE GUIDE

Guide with base shades



Shade level

Colour Cream

Mix tone

9%(30vol) or 12% (40vol)
Cream Peroxide

10

30gr

1 cm = 0.5 g

30.5 g

9

30gr

2 cm = 1.0 g

31.0 g

8

30gr

3 cm = 1.5 g

31.5 g

7

30gr

4 cm = 2.0 g

32.0 g

6

30gr

5 cm = 2.5 g

32.5 g

5

30gr

6cm = 3 g

33.0 g

4

30gr

7 cm = 3.5 g

33.5 g

3

30gr

8 cm = 4.0 g

34.0 g

2

30gr

9cm = 4.5 g

34.5 g

Hints & Tips

WUNDERBAR MIX TONE 0/0

- Clear 0/0 is used to dilute the pigment in a colour formula
- Not designed to lift one level lighter.
- The mixing ratio can be up to 1 part fashion shade + 1 part 0/0.
- The amount of 0/0 should never exceed the amount of fashion shade!

Example formula: (Balancing lengths and ends)

- Create desired shade 6/6
- 1 part 5/6 + 1 part 0/0 + 1.9% or 6% Cream Peroxide

DO NOT use 0/0 (or formula containing 0/0) on the roots or natural hair!



0/0



Wunderbar

DEMI-PERMANENT COLOURS

Levels 2 – 10 in all shades & tones may be converted into Demi-permanent colours using 1.9% or 3% cream peroxide



Features & Benefits

DEMI-PERMANENT HAIR COLOUR

- Gentle & first time colouring
- Refresh dull pre-coloured hair
- Cover first time greys (up to 50%)
- Enhance natural colour
- Eliminate unwanted tones
- Lasts up to 24 washes

It is not designed to lift hair colour, or for covering more than 50% grey



Application & Peroxides

DEMI-PERMANENT COLOUR

Levels 2 – 10

1.9%/6vol – Light Colouration

- Refreshing
- Adding tone
- Covering grey up to 30%

3%/10vol – Cover 30-50% grey

- Intensify shades

MIXING RATIO 1

 Timing 20 mins



TO

2



Apply to freshly-washed damp hair

*Rinse thoroughly (Do not shampoo again)
Condition & style*

Colour Neutralizer

POST COLOUR SHAMPOO

- Stops all chemical action and returns hair back to its normal pH level
- Removes any traces of peroxide & neutralises alkali concentration
 - prevents oxidation
 - stabilises the colour preventing fade
- Contains nourishing and revitalising active ingredients
- Does not weigh the hair down



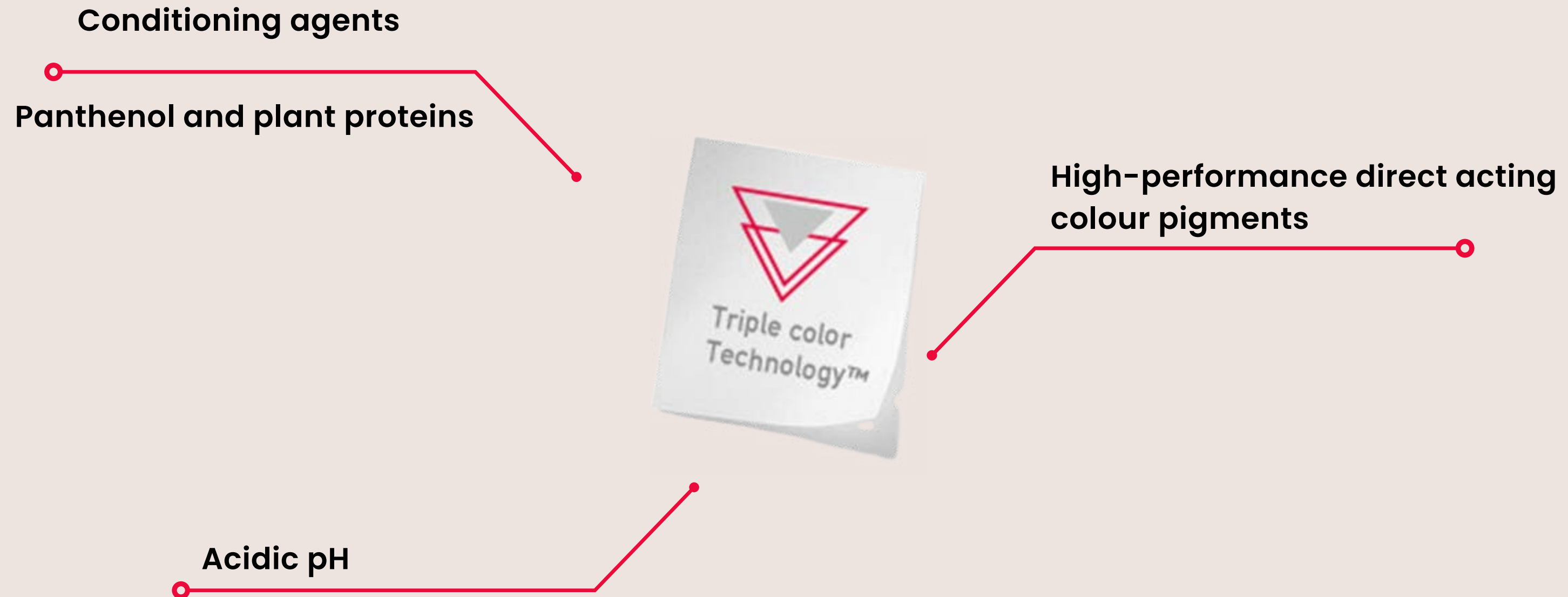
Freestyle Color

(SEMI-PERMANENT – TEMPORARY)



Features & benefits

TRIPLE COLOUR TECHNOLOGY



Freestyle Colour

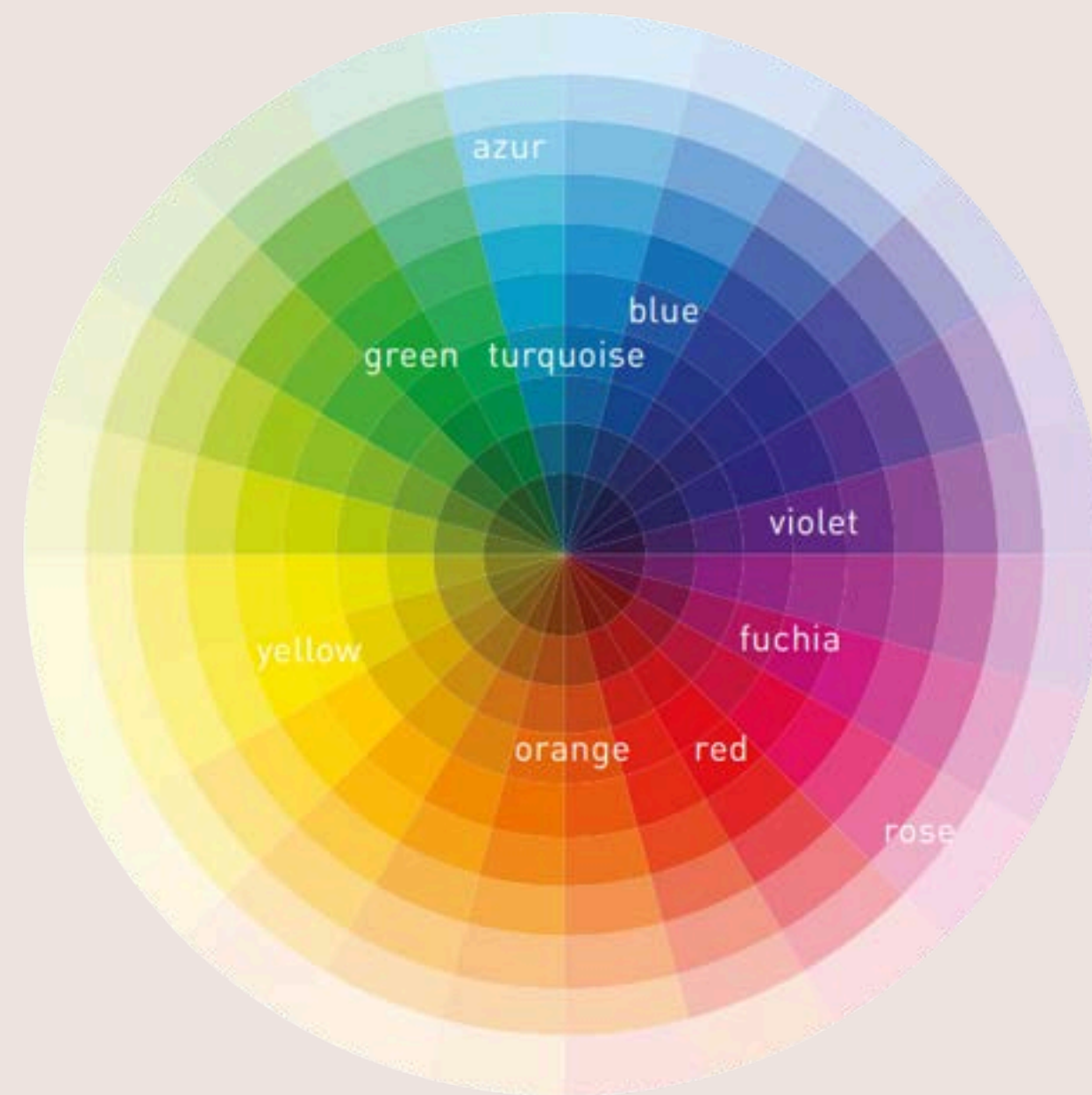
BENEFITS

- Semi-permanent hair colour cream
- 8 Intense shades
- 3 Pastel shades + 1 CLEAR tone.
- Intermix Shades
- Pre-pigmentating.
- True to tone
- 100 ml tube
- Vegan Formula

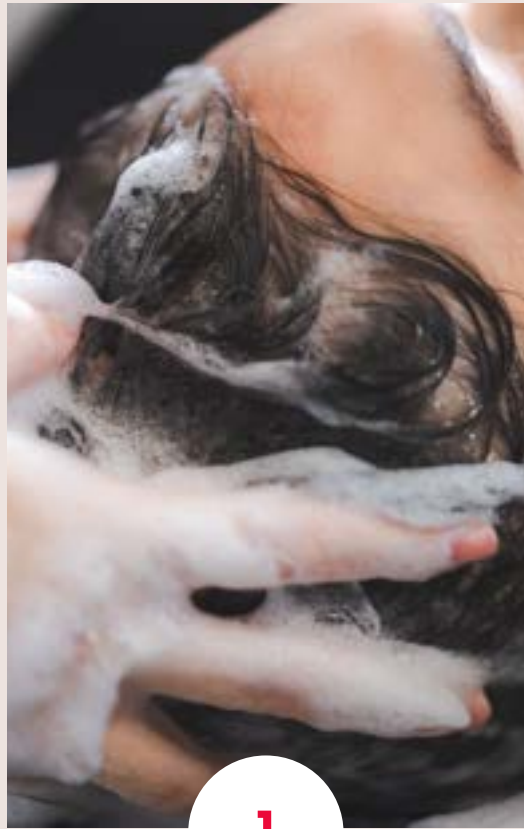


Freestyle Colour

COLOUR WHEEL



Freestyle Color **APPLICATION**



1



2



3



4



5



6

1. Fresh hair Apply to freshly-washed & dried hair
2. No mixing required
3. Best results achieved on pre-lightened hair
4. Processing Time 15 mins
5. Rinse thoroughly (Do not shampoo again)
6. Condition & style

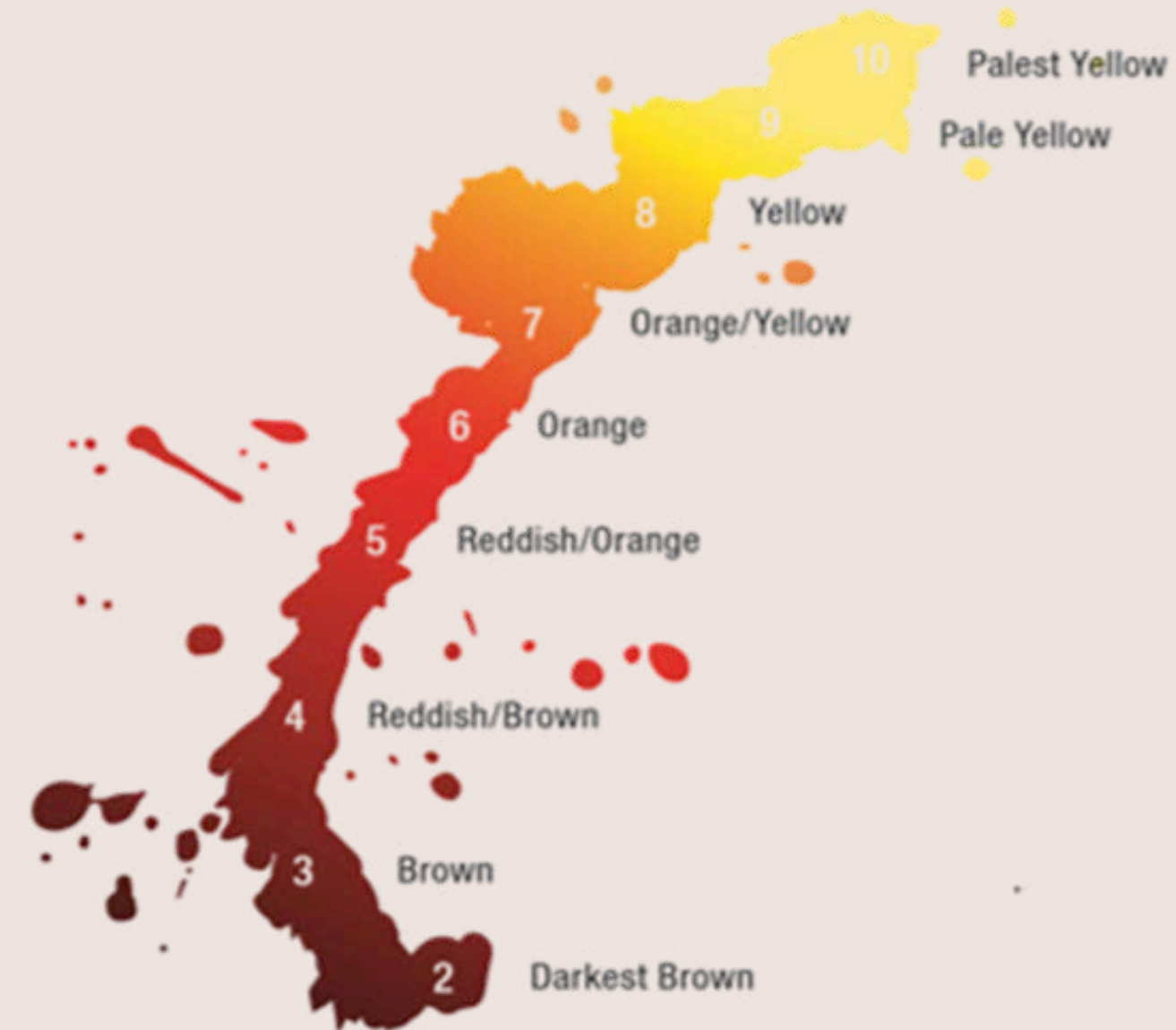
Freestyle Color

PRE-PIGMENTATION







Wunderbar Freestyle colour correction:

Element of colour correction –
Re-pigmentation of previously bleached or
lightened hair –
Refill the hair preventing flat washed out or ashy
results –

**Not applicable for pre-pigmentation of
naturally grey/white hair!**



Underlying pigments by colour level

level		formula
10		20g Clear + 1g Yellow
9-8		20g Clear + 4g Yellow
7		20g Clear + 2g Yellow + 1g Orange
6		20g Clear + 2g Orange
5		Orange (pure)
4		20g Red + 4g Violet
3-2		20g Red + 10g Violet

Pre-pigmentation

FORMULAS PER LEVEL

The more the formula is diluted the softer the pre-pigmented tone will be on the hair.

Pre-pigmentation

FORMULAS PER LEVEL

Depending on the level of paleness, hair condition and desired tonal result, the respective Wunderbar Freestyle formula can be:

A. Applied directly onto clean Damp– (ideally with a brush)

For a brighter more intense result

B. Diluted with water in a mixing ratio 1 : 2 or 1 :3 ratio
Whisk & apply at the basin with a sponge to clean, damp hair.



A



B

Freestyle Color

APPLYING DESIRED SHADE:

- Rinse thoroughly and lightly shampoo
- Apply desired permanent or demi-permanent Wunderbar Hair Color Cream!

For Demi-permanent Hair Colour with apply to damp/towel dried hair.

For Permanent Hair Colour with apply to dry hair.





Hints & Tips

FREESTYLE SEMI-PERMANENT COLOURING

Removing colour – Use Cleansing shampoo & bleach powder

- Takes time
- Work it in at the basin
- Repeat the process if needed
- Closely watch the hairs condition

Hints & Tips

FREESTYLE SEMI-PERMANENT COLOURING

Shade Levels



Fuchia

Hints & Tips

FREESTYLE SEMI-PERMANENT COLOURING

Shade Levels

Bleach

9

8

6



Orange

Hints & Tips

FREESTYLE SEMI-PERMANENT COLOURING

Shade Levels



Red

Hints & Tips

FREESTYLE SEMI-PERMANENT COLOURING

Shade Levels

Bleach

10

9



Blue

Bleach

10

9



Turquoise

Hints & Tips

FREESTYLE SEMI-PERMANENT COLOURING

Shade Levels

Bleach

10

9



Violet

Bleach

10



Yellow

Bleach

10

9



Green

Hints & Tips

FREESTYLE SEMI-PERMANENT COLOURING

Create deep purple



Freestyle Violet



White Base



Freestyle Red + Blue

Hints & Tips

FREESTYLE SEMI-PERMANENT COLOURING

Shade Levels

Bleach

10

9

Bleach

Bleach



Pastel Rose

Grey

Aqua

Gloss'n Tone

DEMI PERMANENT COLOUR





Gloss'n Tone

BENEFITS

- Ammonia free
- Acidic pH
- High shine & conditioning
- Vegan formula
- Zero lift
- Triple Colour Technology™
- Vegetal Protein Complex
- + D-Panthenol
- 20 washes
- 33 shades



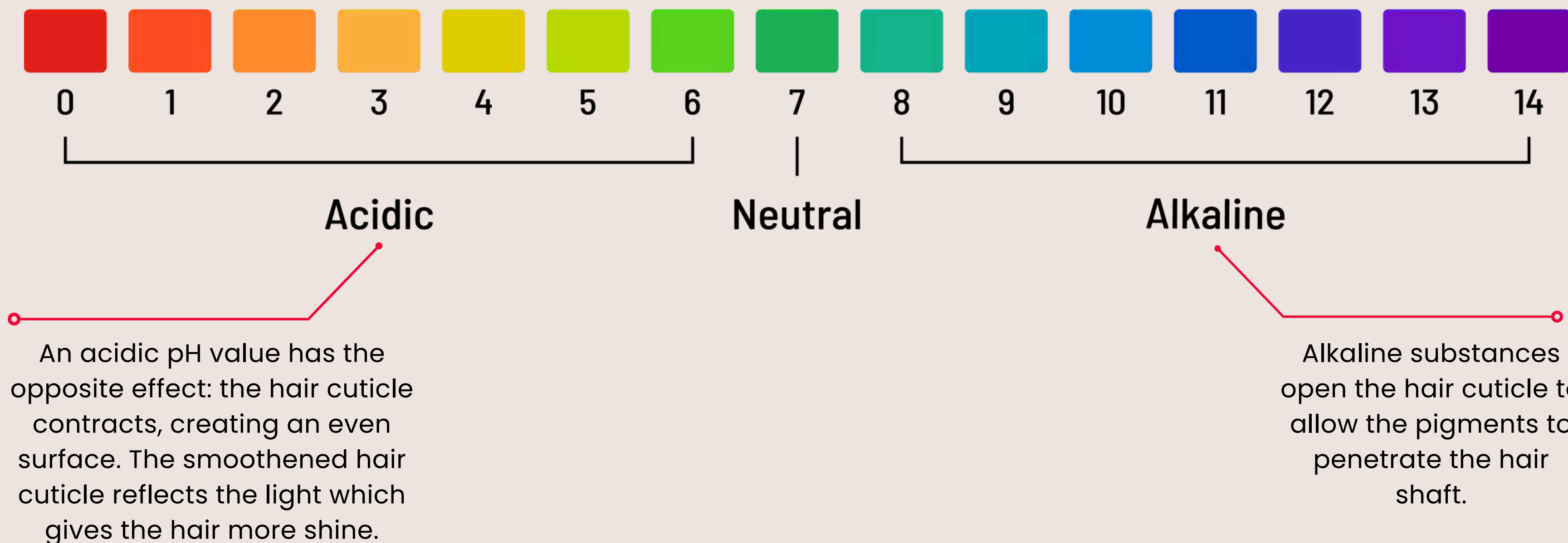
Gloss'nTone **TECHNOLOGY**



Our guarantee that each individual product delivers optimal performance, so you achieve the best colour results.
The condition of the hair will be improved offering beautiful shining hair.

Gloss'n Tone

PH SCALE



Gloss'nTone

PRODUCT TECHNOLOGY

Vegetal Protein Complex:

a vegan alternative to Collagen

- Consists of hydrolysed soy protein, rice amino acids, hydrolysis
- Baobab seed extract and L-proline
- Designed to mimic the amino acid composition and sensory profile of hydrolysed collagen

Benefits:

- Increases hair resistance to breakage
- Improves tensile strength
- Facilitates wet/dry combing for better manageability



Gloss'nTone

PRODUCT TECHNOLOGY

D-Panthenol:

a natural mega-moisturizer

- Vitamin B precursor known in skincare for its anti-inflammatory
- Long lasting moisturizing effect
- Emollient & soothing ingredient for hair

Benefits:

- Helps balance moisture level, improves suppleness and strengthen the hair
- Soft & healthy looking hair



Gloss'n Tone SHADE RANGE

Gloss'n Tone

	0X/0	0X/01	0X/07	0X/1	0X/16	0X/18	0X/3	0X/34	0X/37	0X/38	0X/6	0X/8
Level	Nature	Nat. Ash	Nat. Brown	Ash	Ash Violet	Ash Pearl	Gold	Gold Red	Gold Brown	Gold Pearl	Violet	Pearl
10												
9												
8												
7												
6												
5												
4												



00/00

Clear

Clear : gives more shine and can be used on its own or to dilute the intensity of a shade

SHADES COORDINATES

	10	Extra Light Blonde
	9	Very light Blonde
	8	Light Blonde
	7	Medium Blonde
	6	Dark Blonde
	5	Light Brown
	4	Medium Brown
	3	Dark Brown
	2	Black





SHADES COORDINATES

1	Ash (Blue)
2	Matt (Green)
3	Gold (Yellow)
4	Red
5	Mahogany
6	Violet
7	Brown
8	Pearl (Blue)
9	Cendré (iridescent)

Gloss'n tone

LEVEL . TONES

09/18

"0" in front
means
translucent/
zero lift

**colour
depth**

**primary
reflex**

**secondary
Reflex**





Gloss's Tone

CREAM DEVELOPER 1.8% / 6VOL

This specific cream developer **is thicker / higher in viscosity** to allow the colour to be mixed in a bowl and applied more precisely with a tinting brush.

Ideal for targeted colour application resp. in combination with Wunderbar Hair Color Cream to balance the lengths & ends.

Formulas

GLOSS'N TONE

Apply to pre-washed or dry hair

1. Allow processing time of 5–20 minutes without heat, max. 15 minutes with heat
2. Shampoo and rinse

No post color treatment required! If necessary, use the Wunderbar VEGAN Color Protect Conditioner



MIXING RATIO 1



Timing 5–20 mins



TO

1



Gloss'nTone

HOW TO USE

Glossing and Toning



Apply all-over :

Acidic Colour =
Wunderbar demi-permanent
Gloss'n Tone Liquid Color

Balancing

Zone 1:
Alkaline colour =
Wunderbar permanent
Hair color Cream



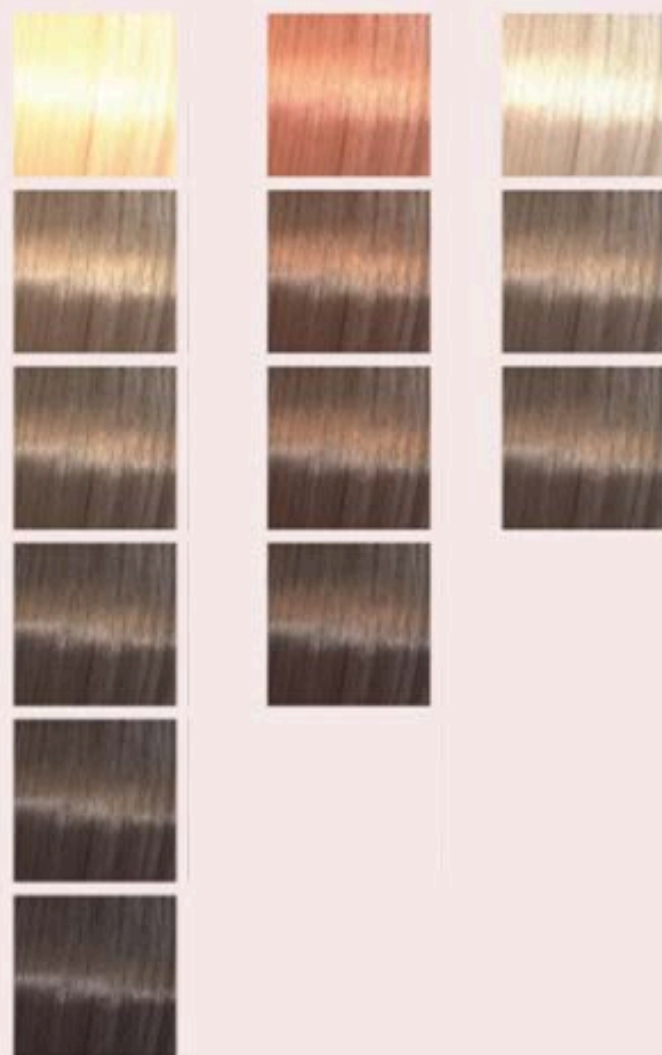
Zone 2:
Acidic colour =
Wunderbar demi-
permanent Gloss's
Tone liquid colour

***Maximise the colour &
Minimise the stress of
the hair.***

Gloss'n Tone

FORMULAS PER LEVEL

A

STARTING
DEPTH

08/34



09/81



B

RATIO

1:1

2:1

3:1

4:1

5:1

10:1

08/34



07/34



A

Gloss'n Tone won't lift the natural pigment, it's just depositing color

-Therefore, the colour result varies depending on the natural colour / starting depth

-The lighter the natural tone, the more intense the colour result

B

- for extra brilliant shine

-to soften / dilute any of the Gloss'n Tone shades

The example shows how to create subtle, powdery peach, rose shades by mixing with X/34 shades with 00/00 Clear.

Zero Lift

00/00 - Clear



Always mix 1:1 with developer, e.g.

10ml 00/00 Clear

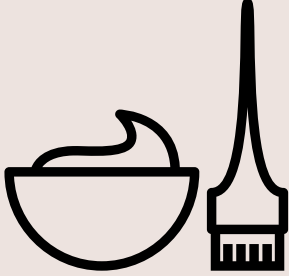

+ 1ml Gloss'n Tone shade

+ 11ml Cream Peroxide

Gloss'n Tone

SERVICES

Gloss'n Tone

	Application		
Glossing	As „stand-alone“ service to glaze the hair – ideal on pre-washed, towel-dried hair	1:1	20 mins.
Speed toning	Ideal for the time in-between the regular colour services or as „anentry“ service for new colour clients. Apply to towel-dried hair.	1:1	10 mins.
Correcting	For a natural, soft colour correction, to balance slight irregularities and to add depth to ultra blonde hair. Apply to dry hair for optimal saturation.	1:1	20 mins.
Balancing	Root touch-up and lengths & ends balancing in one. Apply Wunderbar Hair Color Cream to the roots. Allow to develop for 10 mins, apply the Gloss'n Tone to the lengths & ends.	1:1	20 mins.

Wunderbar

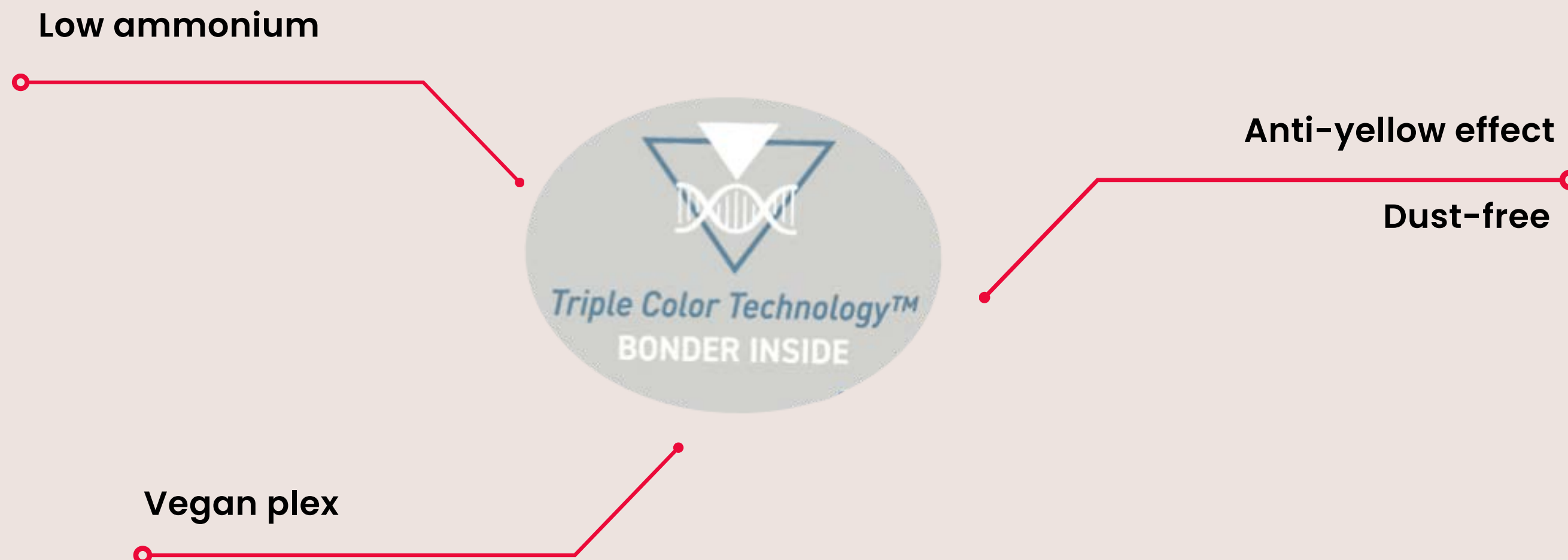
BLOND DE-LIGHT

Blond De-Light



Features & benefits

TRIPLE COLOUR TECHNOLOGY





Vegan Plex

- Plex" based on fermented hyaluronic acid. During the lightening process, the hair is moisturised, which increases elasticity and protects the hair fibre from breakage.
- Guar gum is a natural ingredient of plant origin extracted from the guar bean. It makes the cuticle more stable thanks to galactose and mannose.



Anti-Yellow

- With blue or grey micro pigments that have a neutralising effect.
- For a very light, neutral, "clean" blonde without a yellow tinge!



Blond De-Light



- Controlled & reliable lightening
- Up to 7 levels lift
- Achieve precise, clean looking blonde results
- For multiple techniques, on and off the scalp
- Easy application
- Dust free



- 9+ levels lift
- For extreme and contrasting transformations
- Super fast & effective performance
- Visible lightening hair after only 10 min.
- For multiple off scalp techniques
- Dust free

A



B



Blond De-Light

MIX RATIO

A. Regular Lightening

Mix Ratio 1 : 2

Timing: Max 50 mins

(Depending on the result required and condition of the hair)

B. Freehand Lightening

Mix Ratio 1 : 1,5

Timing: Max 50 mins

(Depending on the result required and condition of the hair)



Wunderbar

PERM



Features & benefits

TRIPLE WAVE TECHNOLOGY



Perm kit

DIFFERENTS STRENGTH

0



1



2



0

For Resistant,
healthy hair

1

For Natural,
normal hair

2

For colour-treated
Sensitive hair

Step by step

CURLING TECHNIQUES



1

Begin at the back of the head and make a horizontal, wave pattern section from one top of the ear to the other one. Divide the space into 5 rectangular, vertical subsections.



2

Using end paper to protect the tips, wind the hair strand spiral fashion onto the (Ø 25mm) curler, at an angle parallel to the subsection. Bend only the top of the curler to secure the strand, creating a candy cane shape. Each section should start and end with the same size curler (side of the face).



3

Take another horizontal, wave pattern section from one side to the other. Divide the space into 7 subsections, alternating one rectangular vertical section with one square section.



4

On the upper section, create a center parting (or use natural parting) using a wave pattern. Divide the space into 5 subsections and again alternate one rectangular vertical section with one square section.

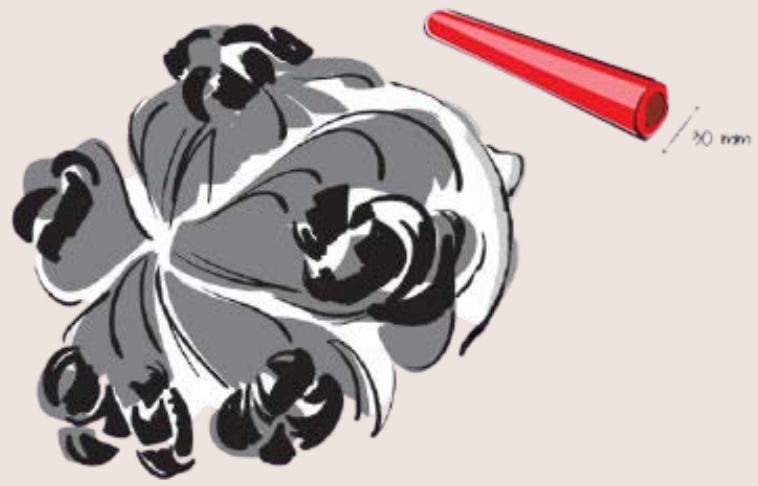


5

Start the Wunderbar Perm Treatment. Apply the Wunderbar Perm Lotion and let it develop as per directions (read the directions carefully prior the using perm treatment).

Step by step

OCEAN WAVE



1

Take 5 large (Ø 30mm), radial and even sections from the hair's natural parting, using the rescision as a guideline.



2

Using endpapers to protect the tips of the hair, wind the hair strands all the way to the roots using the a large roller. Bend the roller into a round shape insuring there is enough tension for it to sit securly.



3

Divide remainder of the hair into another 5 large and even sections. Make sure the partings are offset to the partings above.



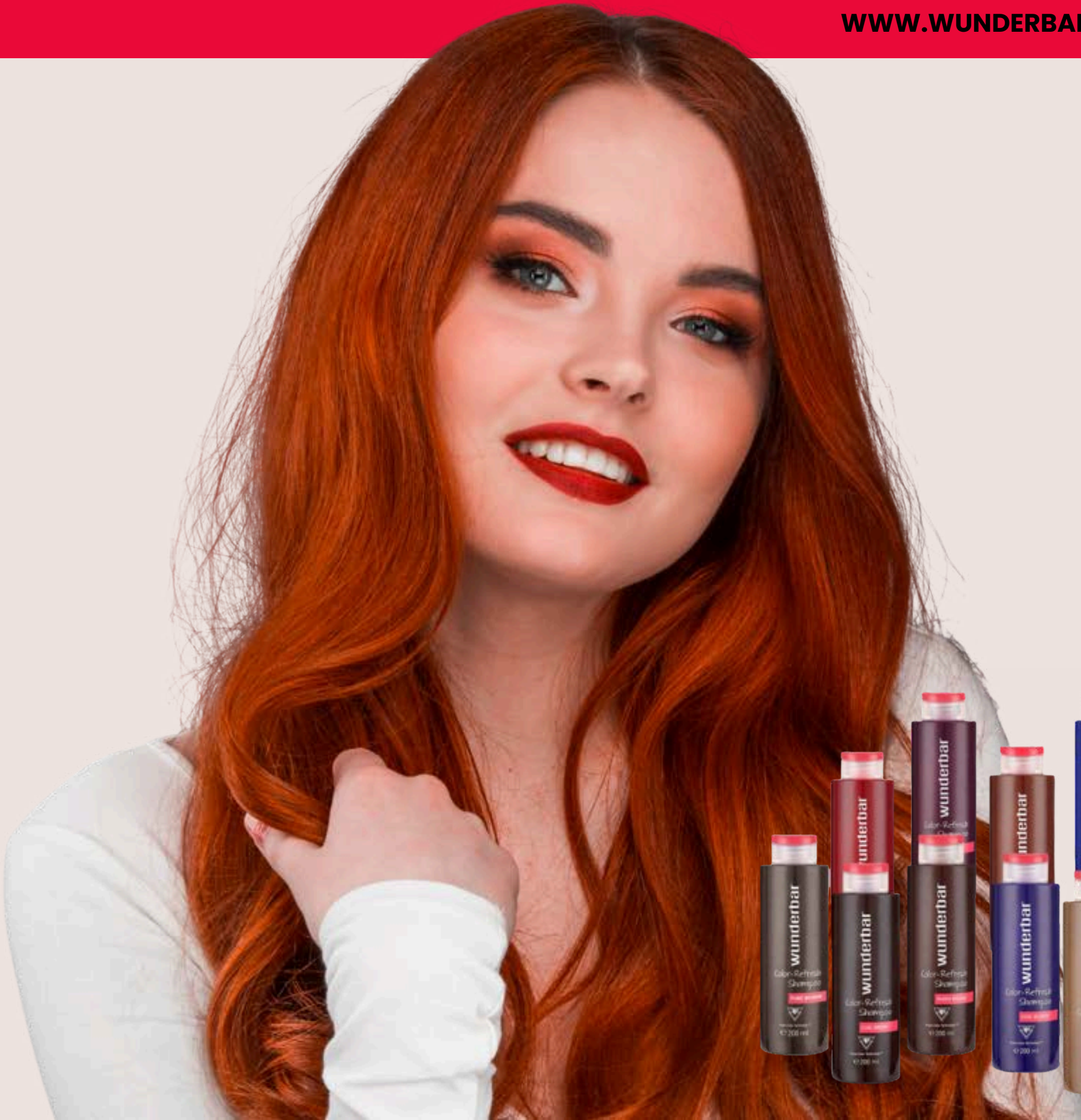
4

Wind the hair strands using large rollers in the same fashion as previously on the top section.



5

Start the Wunderbar Perm Treatment. Apply the Wunderbar Perm Lotion and let it develop as per directions (read the directions carefully prior the using perm treatment).



Wunderbar

COLOR REFRESH



Features & benefits

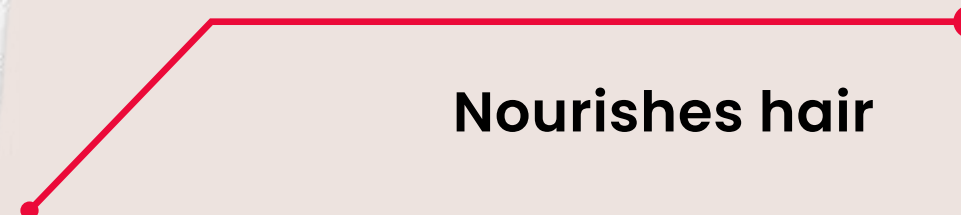
TRIPLE COLOUR TECHNOLOGY

Refreshes, corrects and neutralises

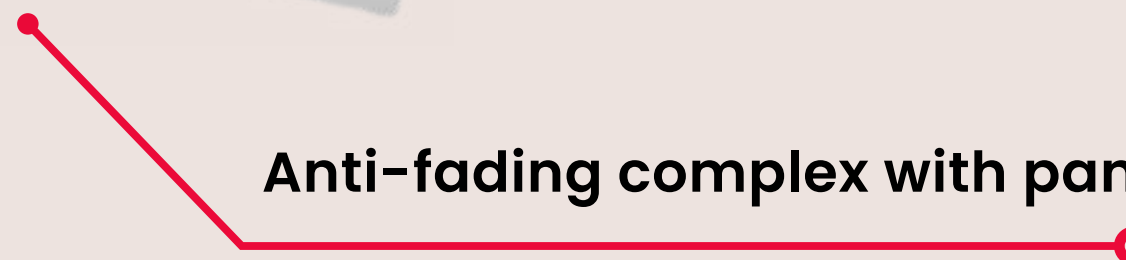


Protects hair colour

Nourishes hair



Anti-fading complex with panthenol



Color Refresh BLONDES

Color Refresh



Gives grey or white hair a silver to steel grey colour reflex

Neutralises yellow tones.

Neutralises cool reflections by adding a warm reflections.

Gives a matte beige tint to natural blonde and bleached hair.

Color Refresh BROWNS

Color Refresh



Adds a pure brown colour reflex and intensifies, revives natural brown hair.



Neutralises cool reflections by adding a warm reflections.



Neutralises warm reflections by adding cool reflections.

Color Refresh OTHER

Color Refresh



Adds an intensive red reflection.



Adds an intensive purple reflection.



Adds an intense copper reflection.

Color Refresh

HOW TO USE

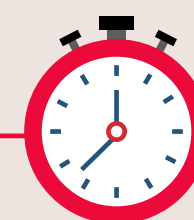
Wunderbar Color Refresh shampoos are easy and user-friendly, ideal for use at home and in the hair salon

Swapping a traditional shampoo once a week for Color Refresh is enough to refresh hair colour.



For deeper colouring, Color Refresh shampoos can be applied strand by strand or with a brush.

Depending on the desired effect, leave the product on for 5 to 10 minutes (or up to 20 minutes for deep results)



Step 2:
Rinse, dry and style.

Color Refresh

PRE – PIGMENT

Option 1



Fill a water spray and add copper or red shampoo, (depending on the depth required) spray this over the hair and colour immediately with the desired colour

Option 2



Step 1:

Wash the hair with the copper or red shampoo.

Step 2:

Rinse, dry and colour with the desired colour.

You are ready to apply the colour



Wunderbar

CARE



Features & benefits

REVITALIZING TRI-COMPLEX

Three supporting actions



Superior all-round care performance



Color-safe

100% Vegan



Range

COLOR PROTECT

for colour
treated hair



SHEER SILVER

for bleached,
blonde hair



HEAD'N HAIR

for scalp
balance



NUTRI REPAIR

for damaged,
dry hair



SMOOTH' N SOFT

for dry, frizzy
hair



VOLUME BOOST

for fine
hair



HAIRTYPE

SHAMPOO

300ml / 1Ltr

CONDITIONER

250ml / 1Ltr

MASK

250ml

OTHER

100ml



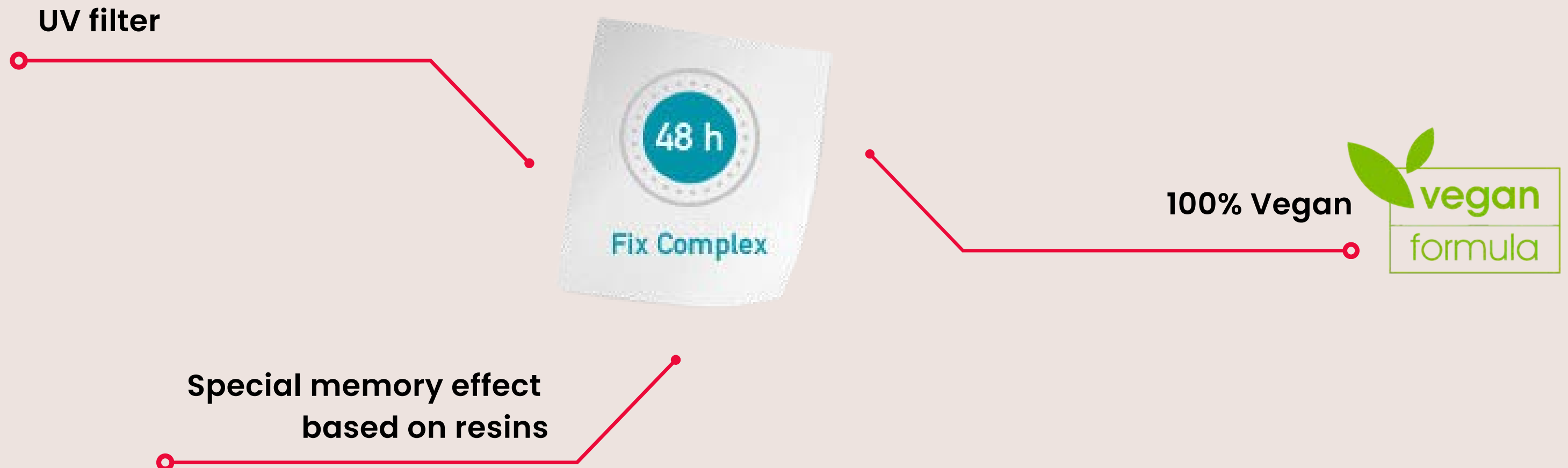
Wunderbar

STYLING



Features & benefits

48 H FIX COMPLEX



Range

HAIRSPRAY (Aerosol)

STYLING MOUSSE

SPRAY (Non-Aerosol)

OTHER

SOFT / TEXTURE

Protect-it
quick Dry Heat spray



Gloss-It
Top Coat Hair Oil



MEDIUM

Volume-Up
Setting Sray



STRONG

Finish-it
Hairspray



Power-Up
Styling Mousse



EXTRA STRONG

Fix-it
Hairlacquer



wunderbar
create wonderful hair

The Consultation Guide and online education is available on the Salon Services website

